

晴天雨天要樂天

難關難過終會過

香港撒瑪利亞防止自殺會



THE SAMARITAN BEFRIENDERS HONG KONG

2001 年報 Annual Report

1. Brief History 機構簡史	2
2. Ethos and Modus Operandi 服務精神及宗旨	4
3. Organizational Structure 組織架構	6
4. Chairman's Report 主席報告	8
5. Service Report 服務報告	12
5.1 Helpline Service 求助熱線服務	
5.2 Volunteers Training 義工訓練	
5.3 Community Education Service 社區教育服務	
5.4 Supportive service for HKCEE 中五會考放榜支援服務	
5.5 Mass Media and Visit 傳媒及探訪	
6. Figures about Suicide in Hong Kong 2001 香港自殺統計數字分析	28
6.1 Suicide Deaths in Hong Kong 自殺死亡統計數字	
7. Sharing Article "Days are tough, but not as tough as you - getting by jobless days" 文章分享: 難關難過關關過 —— 如何過渡失業的日子	40
8. Titbits 活動花絮	42
9. Auditors' and Financial Report 財政報告	46
10. Acknowledgements 鳴謝	53
11. We need your help 捐助	54

BRIEF HISTORY

The Samaritan Befrienders Hong Kong (SBHK) was established in 1960 under the name "Suicide Prevention Society". It was the first of its kind in Asia. It registered as a society in Hong Kong in 1963, and subsequently renamed "The Samaritan Befrienders Hong Kong". In 1994, SBHK was incorporated as a limited company.

In the 70s, SBHK offered services by 2 distinct units; one in Cantonese, the other in English. The English unit was dissolved in 1982 for administrative reasons, but for SBHK as a whole, counseling service has been maintained ever since its establishment.

SBHK is a local voluntary agency run by volunteer workers. Though non-religious in nature, SBHK takes after the generosity and benevolence of the Good Samaritan in the Bible in an effort of lending a helping hand to the distressed and helpless. Through giving support and rendering emotional counselling to them, we help them to help themselves.

In the wake of a significant rise of students committing suicide due to their setback in the Hong Kong Certificate Examination in 1964, SBHK launched a Summer Hotline Service for Form 5 graduates in 1965, and the Service has been maintained ever since. Following our example, other organizations joined in, and now resources from various quarters are made available to help students finding a way out of their cul-de-sac.

Spirit

To bring out the benevolence in human nature and with love, patience and compassion, nurture the spirit of mutual aid, mutual support and mutual affection.

Mission

- (a) To befriend, on humanitarian grounds, people who are facing difficulties or are lonely and depressed, thus helping them to regain confidence in life.
- (b) To publicise and further the spirit of our service in the community by talks, seminars, research and other means.
- (c) To help South East Asia and neighbouring areas to set up organizations with a nature and mission similar to ours.

簡史

「香港撒瑪利亞防止自殺會」於一九六〇年七月成立。原名是「防止自殺會」，是亞洲同類組織的首創。於一九六三年十月在本港作社團註冊，後來改名為「香港撒瑪利亞防止自殺會」，並於一九九四年轉為公司註冊。本會在七十年代設有中、英文部，分別提供粵語及英語服務，至一九八二年，本會因行政關係刪除了英文部，而輔導服務一直推行至今。

本會為香港土生土長，並且全部由義工組成的志願服務機構，並無宗教立場，但以聖經中好撒瑪利亞人的友善博愛和助人為樂的精神作榜樣，向絕望及瀕臨困境人士伸出同情之手，予以扶持及適當的情緒輔導，達到助人自助的目標。鑑於一九六四年因會考落敗而萌輕生念頭的學生顯著增加，本會遂於一九六五年展開中五會考生輔導服務，一直推行無間，並喚起其他服務團體的參與，開拓各方資源，有助莘莘學子以解徬徨之困。

精神

發揚人類善美的本質，以愛心、耐性及同情，建立人際間互助、互勉、互愛的精神。

宗旨

- (一) 基於人道立場，協助面臨各種困難，陷於孤獨與沮喪的人士，重建求生信念。
- (二) 透過演說、講座、刊物、調查報告等方式，宣傳及推廣本會的服務精神。
- (三) 協助東南亞及香港鄰近地區，建立與本會性質及目標相同的組織。



ETHOS AND MODUS OPERANDI

Ethos

1. We establish ourselves as the Samaritan Befrienders Hong Kong to bring out in full the benevolence in human nature, and with love, patience and compassion, nurture the spirit of mutual aid, mutual support and mutual affection.
2. We give ear to the hopeless, the helpless and the suicidal so that they can relate and relieve their inner pain and distress.
3. We let help seekers feel accepted and supported so as to enable them to overcome their emotional distress and face up to their problems.
4. We respect the right of self-determination of help seekers even if they decide to commit suicide, and also their right to discontinue contact with us at any time.
5. We respect the privacy of help seekers and will not divulge their personal information to any outside party, save that for the purpose of providing effective service, the Chairman and supervisory officers have the right to know what a help seeker has told us. No service shall be provided should a help seeker find this unacceptable.
6. We shall not take advantage of our contact with help seekers to instil personal values, faith or political stance.

Modus Operandi

1. We operate a 24-hour hotline service, and an interview service by appointment if circumstances permit. Help seekers can also write to us.
2. We endeavour to talk to every help seeker but priority is given to the suicidal. Should a help seeker display no suicidal inclination but keep on contacting us on a prolonged basis, limited service shall be provided only if we deem it beneficial to him/her.
3. If the situation of a help seeker is such that substantive relief (social or medical service) is warranted, then we shall give him/her relevant information, or with his/her consent, refer his/her case to relevant organizations. In case of emergency and when the help seeker does not object, we shall inform relevant organizations or persons on his/her behalf to ask for help.
4. When a help seeker asks us to help another person who is suicidal inclined, we shall provide information as best we can and suggest that the other person should contact us. We shall not disturb anyone who does not approach us directly, except when that person has to contact us through another person by reason of young age, infirmity or ill health. In that case, we shall try to contact him/her.
5. All our members are volunteers, who have gone through a selection process, been trained, and are being supervised by senior members and professionals.
6. Our members shall let help seekers know only their surname and membership number. Other personal information shall be kept confidential. Help seekers shall only contact our members through us.
7. We promote suicide prevention through social services, public seminars, publications (annual reports, newsletters, books and reports), researches and surveys, publicity and education, as well as international conferences.
8. We offer assistance to South East Asia and neighbouring regions in establishing organizations with a nature and mission similar to ours.

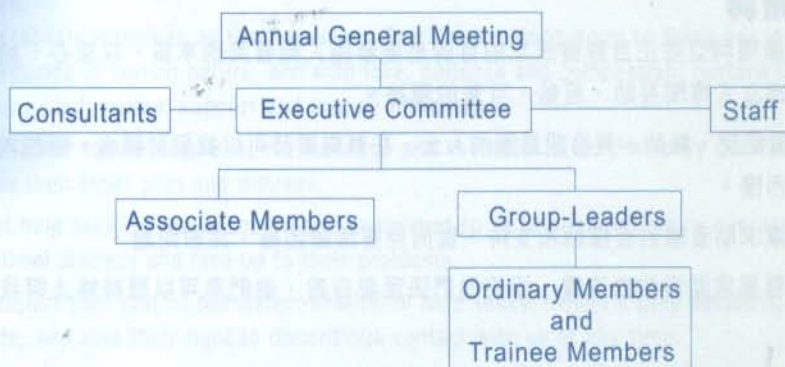
服務精神

1. 香港撒瑪利亞防止自殺會成立的目的是要發揚人類善美的本質，以愛心、耐性及同情，建立人際間互助、互勉、互愛的精神。
2. 我們讓絕望、無助、有自殺意圖的人士，在有需要時可以找到聆聽者，訴說內心的痛苦和困擾。
3. 我們讓求助者感到被接納和支持，從而克服情緒困擾、面對問題。
4. 我們尊重求助者的自決權，即使他們決定要自殺，他們亦可以隨時終止與我們的聯絡。
5. 我們尊重求助者的私隱權，在未經求助者同意之前，我們絕不會向會外人士洩露其個人資料，但為了提供有效的服務，本會主席及督導人員有權知道求助者的談話內容。若求助者不能接納，我們將不會提供服務。
6. 我們不會藉著與求助者接觸的機會，向他灌輸個人的價值觀、信仰和政治立場。

本會工作

1. 本會提供二十四小時電話熱線服務，如情況許可亦會提供預約面談服務，求助者亦可以用書信與本會聯絡。
2. 本會會為每一位求助者提供談話服務，但會優先服務有自殺意圖的求助者。如求助者沒有自殺意圖，但長期與我們接觸，我們只會在對求助者有益的情況下，提供有限的服務。
3. 如求助者的情況需要實質援助（社會服務、醫療），本會會提供資料，或在他同意下，轉介有關機構。如情況危急及在求助者不反對下，替他通知有關機構或人士尋求援助。
4. 如求助者要求本會協助其他有自殺傾向的人士時，本會會盡量提供資料，並建議當事人與本會接觸。對於不直接求助的人士，本會概不加以干擾，除非當事人因過於年幼、老邁或身體不適，要由他人代為聯絡，則本會會嘗試接觸當事人。
5. 本會會員全屬義工，是經過挑選和訓練，並由資深會員及專業人士督導。
6. 本會會員只會向求助者透露其姓氏及會員編號，其他個人資料則會保密，求助者只可以透過本會與會員接觸。
7. 本會透過社區服務、公開講座、出版刊物（年報、會訊、書籍、報告）、調查研究、宣傳教育、國際會議等來推動自殺防治的工作。
8. 本會協助東南亞及香港鄰近地區，建立與本會性質及目標相同的組織。

ORGANIZATION STRUCTURE



Executive Committee

(Term of Office: From July 2001 to June 2003)

Chairman: Mr. Wong Yao-wing

Secretary: Mr. Chan Shiu-lun

Treasurer: Ms. Ng Wing-mui (to 2/02)

Ms. Wong Choi-wan (from 2/02)

Committee Members: Mr. Chiang Chi-wai Mr. Kan Pak Kei Mr. Wong Yuen Ching

Ms. Ng Wing-mui (from 3/02)

Staff

Service Coordinator: Ms. Chung Yuet-kiu, Priscilla

Assistant Service Officer: Ms. Chan Sau-ming, Teresa

Ms. Yip Suk-yee

Administrative Assistant: Ms. Lai Chui-yan, Peggy

Clerk: Mr. Lee Kin Hang, David

Part-time office worker: Ms. Lam Mei Ling (from 02/2001 to 07/01)

Ms. Cheng Wai Yee (from 08/01)

Part-time Cleaner: Ms. Ng Yuk-mui

Honorary Consultants

Honorary Consultant: Mr. Allen Lee Peng Fei, JP

Financial Consultant: Y.H. Cheung & Co., Certified Public Accountants

Legal Consultants: Fred Kan & Co., Solicitors & Notaries

Francis K. W. Ho & Co., Solicitors, Agents For Trade Marks & Patents

P.R. Consultant: Mr. Forest L.S.Cheung

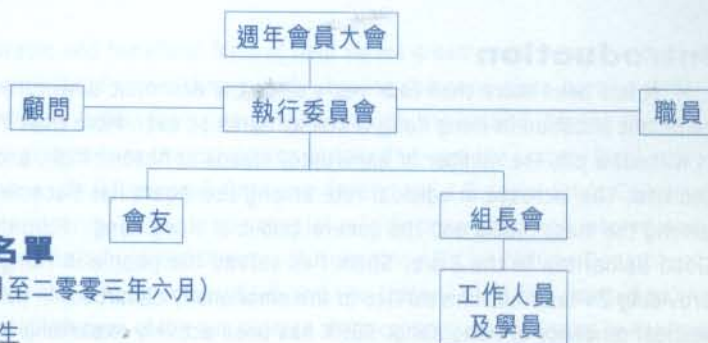
Service Consultants: Ms. Jolene Mui, Service Manager, CPNS CPH, Castle Peak Hospital

Dr. Chiu Siu-ning, Senior Medical Officer (Psychiatry), Community Psychiatric Team, Kwai Chung Hospital

Ms. Ide Chan, Clinical Psychologist, Tuen Mun Hospital

Dr. Hau Kit-tai, Ph.D., Chairman the Department of Education Psychology, Faculty of Education, CUHK

Dr. Linda C.W. Lam, Associate Professor, Department, of Psych CUHK



義務執行委員名單

(二零零一年七月至二零零三年六月)

主席：黃祐榮先生

秘書：陳紹麟先生

財政：伍詠梅小姐 (至02年2月止)

黃彩雲小姐 (由02年2月起)

委員：蔣志偉先生

黃遠青小姐

簡柏基先生

伍詠梅小姐 (由02年3月起)

職員名單 (2001年)

服務協調主任：鍾月嬌小姐

助理服務主任：陳秀明小姐

葉淑儀小姐

行政助理：黎翠欣小姐

文員：李健衡先生

兼職文員：林美玲小姐 (由01年2月至01年7月)

鄭惠儀小姐 (由01年8月開始)

兼職清潔員：吳玉梅女士

義務顧問名單

榮譽顧問：李鵬飛太平紳士

財務顧問：張耀鴻會計師樓

法律顧問：簡家驄律師行

何啟華律師事務所

公關顧問：張林森先生

服務顧問：梅杏春小姐 (青山醫院社康服務經理)

趙少寧醫生 (葵涌醫院社區精神科治療組精神科高級醫生)

陳淑芳小姐 (屯門醫院臨床心理學家)

侯傑泰博士 (香港中文大學教育學院教育心理學系主任)

林翠華醫生 (香港中文大學醫學院精神科副教授)

Wong Yao-wing

Chairman

Introduction

It has been more than four years since the economic downturn in 1997; however, the economic situation in Hong Kong is still as harsh as ever. More than 7% of the working force is without a job, the number of bankruptcy stands at historic high, and suicidal rate is still on the rise. The increase in suicidal rate among teenagers has become the focus of attention among the mass media and the general public of Hong Kong. Following the footsteps of the Good Samaritan in the Bible, SBHK has served the people in Hong Kong for 41 years by providing 24-hour hot-line service to the emotionally disturbed, in particular to those having suicidal tendency in Hong Kong. SBHK has been actively expanding our services to response to the need of the community.

Service Overview

In the year of 2001, our hot-line service received a total of 10831 calls. Among them 7580 calls were from the emotionally disturbed. The rest were enquiry calls, frivolous calls and mute calls. In summary, male to female ratio were 1:1.12. The main problem areas of these calls were Love problem (13.49%), Mental problem (16.94%), Occupation problem (14.52%) and Family problem (12.36%). These figures show an increase of 11.3% over those of previous year. Our attention is drawn to the 19 and below age group which has 875 calls and is accounted for 11.54% of the total. This indicates an increased suicidal tendency among young people who has already become a grave concern of SBHK and the public at large.

Manpower

SBHK always emphasizes on quality and quantity, with callers as our top priority. In order to improve both our service quality and quantity, in the past year, we carried out two recruitment exercises. We concentrated on recruiting daytime and overnight shift volunteers so as to strengthen our 24-hour commitment. Besides manpower reinforcement, we also held training courses for our volunteers on various aspects of counseling. To better equip our volunteers, apart from courses on basic listening skills, we also conduct case sharing, high-risk cases discussion and how to handle special situations such as affairs after marriage and debt counseling.

Community Education

While hot-line service may serve as an instantaneous support to the emotionally distressed, SBHK understands that public education is one of the keys to effectively reducing the number of suicides in the long run. Under limited resources, we continued to hold community education programs on suicidal prevention. This year 11 suicidal prevention workshops were held for 657 teachers, parents, social workers, women volunteers and police officers. There were 5 peer counseling workshops conducted for a total of 105 participants. To promote positive life among youngsters, talks and seminars were given in a number of primary and secondary schools in Hong Kong. There were altogether 4336 participants. SBHK also organized a large scale community activity - the Brave One in Life, and there were a total of 600 participants.

Future Development

The role of hot-line service is very important and certainly provides positive support to the emotionally distressed and is the major service provided by SBHK in the past years.

However, the most desirable and beneficial form of help varies greatly with people and time. To someone thinking seriously of committing suicide, having someone close by who understands and cares is obviously better than just talking through the hotline. Seeing the need SBHK has submitted two proposals to the Hong Kong Jockey Club and the Lottery Fund applying for funds to establish a Life Education & Resource Center and a Suicidal Crisis Center so that we can serve the community better in the area of suicide prevention and intervention. Thanks for the support and help from the Director of Hong Kong Social Welfare Department, Mrs. Carrie Lam, both the Hong Kong Jockey Club and the Lottery Fund has granted us the required funds for the establishment of the two centers. Both centers will be located in Kowloon Pak Tin Estate and will be in operation in the third quarter of 2002. The Suicidal Crisis Center will employ 9 professional social workers and aims at providing round-the-clock intensive crisis service to suicidal people especially during the active crisis period. The center will accept referral from suicide prevention hot lines, Government and related agencies. The Life Education & Resource Center will employ 3 professional social workers. The objective of the center is to promote "Positive Life" in community. The center will organize talks and workshops on suicide prevention and train up community gatekeepers such as teachers, parents and peers and allowing them to take a more effective suicide watch in the community.

Conclusion

Last but not the least, I would like to share with you the story of the Samaritan. According to the Bible, the Samaritan who helped saving the life of the stranger did not come from a very religious background. He was not particularly well educated. He did not have a lot of money or much time to spare either. He saved the man simply because he respects life and he loves and cares for others. It is only because of this little kindness a precious life was saved. It is based on the very same reason that the volunteers in SBHK serve the community in Hong Kong for 41 years. SBHK believes that not only our volunteers, but also every one of us can do the same to spread our love to our neighbors. Hong Kong is still under the influence of the economic crisis and we have to face a lot of challenges. If every one of us in Hong Kong can share the spirit of good neighborhood by actively care and listen to the needs of our family, friends and colleagues, we can make a brighter and more beautiful tomorrow for Hong Kong.

前言

一九九七金融風暴雖然距今已有四年多了，但香港的經濟還未有一點起色。金融風暴引發出來的餘波仍未了，失業率不斷上升至7%水平以上，破產個案數目為歷年之冠，自殺率持續上升，自殺個案年輕化更成為傳媒及社會大眾所關注的焦點。香港撒瑪利亞防止自殺會在香港服務四十一年，一直以聖經故事裡好撒瑪利亞人的熱心助人的精神為榜樣，為情緒受困擾及有自殺傾向的人仕，提供我們24小時電話熱線服務，並積極擴展其他服務以配合社會上的需要。

服務概況

本會在2001年共接聽10831個求助來電，其中7580個為求助個案，餘下的是各種查詢、戲弄性或無聲電話。男女的比例約為1:1.12。主要受困擾的種類為愛情(13.49%)、精神問題(16.94%)、職業(14.52%)和家庭(12.36%)。總括來說，求助個案數字比去年多11.3%，而最值得關注的是年齡在19歲以下的求助個案有875宗，佔總數的11.54%，可見青少年受情緒困擾及有自殺傾向的問題日益嚴重，值得各界特別關注。

人力資源

『以案主為本，重質重量』是本會的服務原則，為了提高本會的服務質量，在過去一年中，本會進行了兩次的義工招募。這兩次都集中招募日間和通宵當值義工，以配合加強本會24小時服務的承諾。本會也舉辦各類型的義工在職培訓課程，除了提供一些進深輔導技巧的培訓外，也加入一些特別個案分享及高危個案的討論，如婚外情、欠債個案等，務使我們的義工有更好的裝備，可以更有效協助有需要的求助者。

社區教育

本會明白到預防往往勝於治療，所以在有限的資源下，本會仍積極地推行一連串防止自殺的社區教育活動，希望喚醒社會人士參與防止自殺的工作，愛護身邊人，珍惜每一個生命。在2001年本會共舉辦了11次防止自殺工作坊，對象是老師、家長、社工、婦女義工及警務人員，總參加人數達657名。另外亦舉辦了5次朋輩輔導工作坊，共有105人參加，除此之外，亦到香港各中小學舉辦珍惜生命講座，參加人數多達4336人，在社區上亦舉辦了一個大型社區活動 - 生命的勇者，參與人次共有600名。

未來發展

本會多年來一直以提供電話熱線服務為主，無疑電話熱線服務會是求助者樂於使用的，作為求助者向外求助的接觸點，它的角色依然十分重要；但同時間本會亦明白熱線服務也有其侷限性，基於自殺原因的複雜性，不同的人在不同時間所需求的服務性質也差別很大，我們相信對一個正面臨自殺邊緣的求助者來說，他們往往需要比熱線服務更個人及貼身的關懷和了解。本會相信要更有效面對日益增加的自殺個案，實在有必要擴展現時熱線服務的類型至預防性的教育工作及危機輔導服務。有見及此，本會在過去一年先後向香港賽馬會及獎券基金申請撥款設立生命教育及資源中心和自殺危機處理中

心，得蒙香港社會福利署署長林鄭月娥女士的支持及協助，本會已獲得香港賽馬會及獎券基金的支持，落實實踐這兩個方案。這兩個位於九龍白田村的中心預期會在本年第三季全面投入服務。防止自殺危機中心將會聘請九名專業社工，接受由各防止自殺熱線，政府及有關服務機構的轉介，為有高危自殺傾向的人士提供輔導服務；而生命教育及資源中心將會聘請三名專業社工向香港大眾市民推廣積極人生及珍惜生命的訊息，又將會舉辦訓練課程給學生、家長、老師及有關人士，鼓勵社區人士參與，推廣「關懷身邊人，從聆聽開始」的信念。

總結

最後，我希望借總結部份與大家分享有關聖經裡面所讚揚撒瑪利亞人的故事，祈盼香港每一個人都有這顆愛心去關心和聆聽周圍有需要的人。聖經裡面所讚揚的撒瑪利亞人的故事其實並不是一些很高深的學問又或富很深厚的宗教背景，這個撒瑪利亞人更不是一個家財萬貫，生活優悠寫意的人；撒瑪利亞人所有的，只是那一點對生命的重視和對人的關懷，他就是憑著這點愛心救活了一個寶貴的生命。香港撒瑪利亞防止自殺會的義工四十多年就是本著這一點愛心及關懷去服務我們的求助者，但這可不是我們的專利，我們相信香港每一個人都有這顆愛心。現在香港正面對經濟的危機和經濟轉型的挑戰，我們相信如果每一個香港人都能發揮這顆愛心的光芒及去關心和聆聽周圍有需要的人，包括家人、朋友及同事，互相守望相助，香港一定能夠建立一個更美好的明天。

Chung Yuet-kiu, Priscilla
Service Coordinator

Hotline Service

Our 24 hours hotline service aims at providing people who are depressed, desperate or suicidal with immediate emotional support and crisis intervention.

Number of cases

From January to December of this year, we have received a total number of 10831 cases. Out of 10831 cases, 10734 cases came to us by phone, 57 by face-to-face interview, 5 by letters and 35 by email. Among 10831 cases, 7580 calls were case with emotional need and suicidal risk. When compared with the figure of last year, there was an increase of 11.3%. The remaining of 984 calls were enquiries, 46 calls were prank calls and 2221 calls were silent calls as shown in Table 1.1.

Sex and Age

Among 7580 cases (excluding enquiry, prank and silent calls), about 47% was male help-seekers. The ratio of male to female help-seekers was 1:1.12. The user-friendly nature of hotline service does help to contribute a high percentage of male help-seekers in using hotline.

In respect of age distribution, our hotline users came mainly from age 20 to 44, accounting for 75% of our total number of user. The age group of 30-34 topped our list again in this year and took up 21.77%. Followings are the age group of 25-29 (16.78%) and 20-24 (13.96%) as shown in Table 1.2.

Problem Area

From table 1.3, help-seekers faced problems of four main arenas: (i) mental illness (16.94%), (ii) occupation (14.52%), (iii) love relationship (13.49%) and (iv) family disputes (12.36%). Compared with the figure of last year, we noted that mental illness problem keeps increasing and goes to the top of our list this year. From literature 95% of people who committed suicide was found to have mental disorder. It tells that we should never neglect the issue of mental health when we are going to tackle the problem of suicide.

Next to have captured our attention is the increasing number of finance problem. It has been increased by 2.46%. Apparently, the wave of lay-off in Hong Kong has been causing a lot of pressure to people. And the loss of job income has further worsened the problem of "Negative Asset" since 1997.

Co-relating the age distribution with problem analysis, the major problem concerned by different age group changed and the change does relate to the different developmental task of different age group. For teenager under 20, their major disturbances are sexual and love problem. For 20-29 age group, their major concerns are occupation and love problem. People of 30-39 talked more about occupation and 40-49 age group talked more about their family issue. For people who aged 50 or above, they concerned the most are economic and family problem.

Co-relating the sex distribution with the problem analysis, The major disturbance of male help-seeker who is traditionally taking the role of breadwinner was occupational and economic problem. Whereas the major problem faced by female help-seeker is family issue.

Assessment of Suicidal Risk

Out of 7580 cases, there were 1662 cases assessed with having suicidal ideation and plan representing 22% of the total. The rest of 76% have demonstrated with no immediate suicidal risk but with emotional need looking for someone to talk to (see Table 1.5). The number of case with concrete suicidal plan has been increased from 282 to 348, representing an increase of 23%. We believe that with the provision of intensive crisis counseling service to client with concrete suicidal plan in next year, we will be more able to provide support to such high risk group.

Volunteers Training Program (Pre-service and In-service)

With increasing number of suicide case and wide coverage of suicide case in newspaper, demand on our hotline service has been increasing. In order to increase our volunteer manpower for handling more calls, we conducted one more training class in 36th training course. In this year, we have conducted 2 training courses (35th & 36th) and a total of 113 participant have attended the first stage of our training course.

As case handled by hotline is concerning life and death, we have paid much of our effort in up-keeping the quality of our service. This year, we have conducted 8 on-job training workshops to our volunteers including advanced training course for improving their skills in handling cases and 1 agency visit for understanding more about social resources and making appropriate referral and information to our clients. (see Table 1.7).

Besides hotline volunteer, we have also recruited and trained up a group of "Life Ambassador" for helping to promote "positive life" in community. In this year, we have conducted two training courses and there were a total of 28 participants.

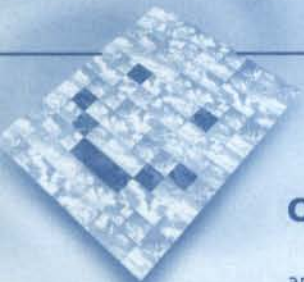
Community Education Service

Regarding to the increasing number of suicide case in previous years, suicide is no longer a topic that we can escape from but to face it actively. In this year, we have conducted a number of talks and workshops on suicide prevention with cooperation from a number of schools or agencies.

In this year, we have conducted 11 suicide prevention workshops and 5 peer counseling groups. We have provided training to gatekeepers including teachers, social workers, police inspector, peer and parents etc in order to enhance their role in life gate keeping. In total, we have conducted 17 talks on "Treasure Life" serving over four thousands students. With assistance of "Life Ambassador", we have also launched an exhibition we called "The Brave One in Life" in September. Participants were over 600 people (Table 1.9 to 1.12).

Supportive Service for HKCEE Student

As invited by schools in Shatin, we got an opportunity to outreach and provide our service in the Joint Recruitment Center this year. We provided emotional support to both students and their parents at scene. The experience was precious and have found the emotional need of parents was also great during that time (Table 1.3).



Others (Mass Media and Visitors)

With our long harory in suicide prevention work, a large number of mass media and visitors approached us for enquiries about suicide, obtaining statistics and inviting our comments on suicide news. We have selected some programs we have attended on TV or Radio to share in this report. Please refer to table 1.14.

鍾月嬌
服務協調主任

熱線服務

熱線服務旨在為有情緒困擾、絕望無助或有自殺意圖的人士提供即時的情緒支援，讓求助者重拾生存的信心。

個案數目

由2001年1月至12月，本會共接獲10831個求助來電，當中有10734個是透過來電求助，其餘的57個透過約見面談、5個則透過書信、35個透過電子郵件。在10831個案中，有7580個是求助個案，比去年的6810個多770個，增幅達11.3%；其餘的來電有984個是查詢性來電，46個是戲弄性來電，而無聲的來電則有2221個（見表一、一）。

性別與年齡

在7580個求助個案中（不包括查詢性來電、戲弄性來電和無聲來電），男性求助者有3570個（佔47.1%），而女性求助者則有4010個（佔52.9%），男女求助者的比例為1：1.12。男性使用求助熱線的百分比持續增多，無疑方便求助者使用的熱線服務的確可以大大提升求助者的求助動機，作為求助者的首個求助接觸點，熱線服務的質素便更見重要。

綜觀求助者的年齡分佈，本會的求助者大部份來自20歲至44歲，佔本會總求助人數的75%。當中30-40歲的年齡組別仍然佔首位（佔21.77%），其次為25-29歲組別（佔16.78%）和20-24歲組別（佔13.96%）（見表一、二）。

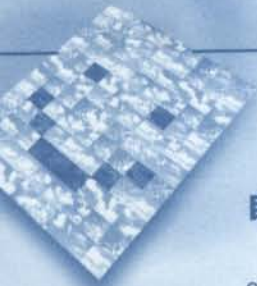
問題種類

本會求助者的困擾問題環繞四大類別：(i) 精神問題（佔16.94%）(ii) 職業問題（佔14.52%）(iii) 愛情問題（佔13.49%）(iv) 家庭（佔12.36%），詳見表一、三，與去年相比，精神問題持續攀升，至今年更升至首位，比去年增多1.19%；在外國研究中，有95%自殺死亡人士是發現患有精神病，而當中抑鬱症佔80%，故在我們處理自殺問題的同時，精神健康這個課題實在不容忽略。

其次值得我們關注的是經濟問題比去年亦增加了2.46%，顯而易見，這與香港裁員潮一浪接一浪及失業高企有著直接的關係，更者，香港市民負資產問題更因為失去工作而無法承擔供樓的費用，令問題變得更為嚴重。

對照年齡與問題種類的分析，不同年齡組別隨著成長階段不同的需要，也有著不同的困擾，20歲以下青少年困擾的問題主要來自性問題和愛情問題，而20-29歲的求助者則以職業及愛情問題為主要的困擾，30-39歲的則以精神和職業問題為主，40-49的以精神和家庭問題為首，而50歲以上較年長一群的困擾則主要來自經濟及家庭問題。

另對照性別與問題種類分析，傳統上作為家庭經濟支柱的男性求助者的困擾問題仍然以職業問題為最多，而經濟問題困擾也有542個；而一向都較著重人際關係及家庭女性求助者則以精神問題和家庭問題的困擾為最多（詳見表一、四）。



自殺危機

在今年7580個求助個案中，有1662個個案是有自殺意念或計劃，佔覈求助個案約22%，其餘的約76%均需要本會提供情緒支援的服務（見表一、五）。而有具體自殺計劃的中或高危個案今年共接348個，較去年的282個，增加約23%，我們相信本會在明年危機中心成立後，為他們提供短期跟進或危機輔導服務，可以進一步協助求助者面對他的問題，更有效地把守生命最後關口。

義工訓練（職前及在職）

隨著日益增多的自殺個案及報章天天大字標題的報導，熱線服務需求亦有增無減。為了增加我們熱線義工人手，在資源沒有增多下，我們嘗試在第36期訓練班加開一班，期望可以增加接聽熱線的義工人手。今年我們舉辦了兩期（第35期及第36期）的義工訓練課程，共113人參與。

由於熱線服務處理的個案是有關生死課題，為了確保服務的質素，我們每年都會為義工提供在職訓練，今年我們共舉辦8個進深訓練課程及個案研習分享會，推進義工處理個案技巧，並安排機構探訪以增加義工對社區資源的認識，以能作出最適當的資料提供或轉介。（詳見附表一、七）。

除熱線義工外，本會亦招募了一群珍惜生命大使協助推廣社區教育服務，在去年我們共舉辦兩個訓練課程，共28人參加。

社區教育服務

日益增多的自殺個案已逐漸引起廣大社會人士對自殺問題的關注，甚致已是大家不可以再逃避而要積極面對的問題，也基於這個原因，本會的社區教育服務在今年向前推進了一大步，曾與不少的學校/團體合作提供了多個珍惜生命講座及預防自殺工作坊，鼓勵社區參與，宣揚積極人生的訊息。

去年，我們總共提供11個防止自殺工作坊及五個朋輩輔導小組，服務對象包括不同類別，包括老師、社工、警務人員、朋輩及家長等，使他們更有效地與本會一起把守著生命關口；除此之外，我們亦替多間中小學校及團體舉辦共17個珍惜生命講座，參與人數共4336人。在社區中，我們亦舉辦了「生命的勇者」展覽活動，參與人次約有600人。各項服務詳見表一、九至一、十二內各項。

中五會考放榜支援服務

在中五放榜期間，本會一向都是透過提供熱線服務為莘莘學子提供情緒支援，在今年承蒙沙田區聯招中心的邀請，有機會外展到聯招中心的現場為學生及其家長或親友提供情緒支援，當中經驗非常寶貴，更發現家長徬徨心情絕不遜於學生本人，服務詳情請見附表一、十三。

傳媒及探訪

過去一年本會亦招待了一大批傳媒朋友或到本會探訪的人士，解答他們有關自殺的查詢，提供有關自殺的數據，回應自殺新聞甚或與傳媒機構合作，參與有關預防自殺的工作和活動等，數目之多不能盡錄，相關的電台及電視節目名稱可參閱附表一、十四。



(Table 1.3) Problem Areas in 2005

(表一、三) 問題地區

Table 1.2) Age Distribution of Clients in 2005				
Age Group	Number of Clients	Percentage	Number of Clients	Percentage
0-10	10	1.0%	10	1.0%
11-20	20	2.0%	20	2.0%
21-30	30	3.0%	30	3.0%
31-40	40	4.0%	40	4.0%
41-50	50	5.0%	50	5.0%
51-60	60	6.0%	60	6.0%
61-70	70	7.0%	70	7.0%
71-80	80	8.0%	80	8.0%
81-90	90	9.0%	90	9.0%
91-100	100	10.0%	100	10.0%
Total	1000	100.0%	1000	100.0%

(Table 1.1) Overall Statistics of Services in 2001
(表一、一) 二零零一全年服務總表

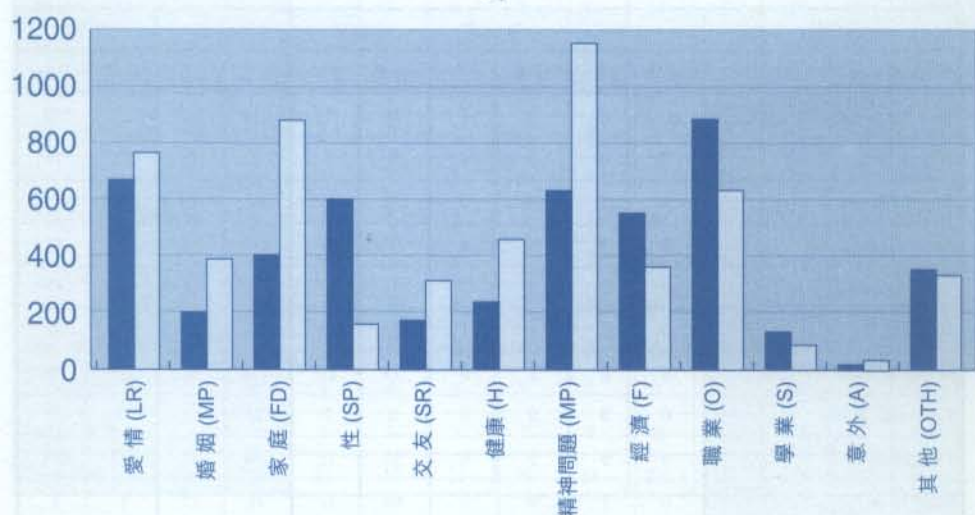
		男 Male	女 Female	不詳 Unknown	總數 Sub-total	總數 Total
個案 Cases	電話 Phone Call	3531	3952	~	7483	7580
	面談 Interview	26	31	~	57	
	書信 Letter	0	5	~	5	
	電郵 e-mail	13	22	~	35	
諮詢 Enquiry Call		618	366	~	984	3251
戲弄 Frivolous Call		29	6	11	46	
無聲 Mute Call		~	~	2221	2221	
總數 Total		4217	4382	2232	10831	10831

(Table 1.2) Age Distribution of Clients in 2001
(表一、二) 二零零一年求助者年齡分佈表

年 齡 Age	性 別 Sex		2001 個案 Cases		2000 個案 Cases	
	男 M	女 F	總 計 Total	%	總 計 Total	%
0-9	0	6	6	0.08	2	0.03
10-14	83	34	117	1.54	114	1.67
15-19	484	268	752	9.92	678	9.96
20-24	608	450	1058	13.96	1162	17.06
25-29	548	724	1272	16.78	1033	15.17
30-34	710	940	1650	21.77	1379	23.19
35-39	346	500	846	11.16	732	10.75
40-44	363	496	859	11.33	771	11.32
45-49	59	215	274	3.62	285	4.19
50-54	101	90	191	2.52	118	1.73
55-59	22	16	38	0.50	35	0.51
60-64	10	14	24	0.32	4	0.06
65+	15	13	28	0.37	10	0.15
不 詳 Unknown	221	244	465	6.13	287	4.21
總 計 Total	3570	4010	7580	100	6810	100

(Figure 1.1) Classification of Cases in 2001

(圖一、一) 困擾種類圖



(Table 1.3) Problem Areas in 2001

(表一、三) 困擾種類

Years 年份 Sex 性別	2001 Cases 個案				2000 Cases 個案	
	M 男	F 女	Total 總計	%	Total 總計	%
Love Relationship 愛情	663	755	1418	13.49	1470	15.95
Marital Problem 婚姻	211	385	596	5.67	636	6.90
Family Disputes 家庭	405	894	1299	12.36	1167	12.66
Sexual Problem 性	607	166	773	7.35	690	7.49
Social Relationship 交友	184	334	518	4.94	543	5.89
Health 健康	262	476	738	7.02	638	6.92
Marital Problem 精神問題	634	1147	1781	16.94	1385	15.03
Finance 經濟	542	364	906	8.62	569	6.17
Occupation 職業	900	627	1527	14.52	1280	13.89
Study 學業	130	83	213	2.03	201	2.18
Accidents 意外	20	45	65	0.62	55	0.60
Others 其他	350	327	677	6.44	582	6.32
Total 總計	4908	5603	10511*	100	9216*	100

* A case may involve more than one problem. Therefore this figure should not be equated to the total number of cases in the year.

* 因每一個案可能涉及多個困擾，故總數並不等於全年個案總數。

(Table 1.4) Age & Sex Distribution Analysis of Cases in 2001
(表一、四)二零零一年求助者問題~年齡及性別分佈

Age 年齡	0-9 歲		10-14 歲		15-19 歲		20-24 歲		25-29 歲	
Problems Areas 個案分類	M 男	F 女	M 男	F 女	M 男	F 女	M 男	F 女	M 男	F 女
Love Relationship 愛情	0	0	1	7	70	111	114	140	158	198
Marital Problem 婚姻	0	0	0	0	0	4	2	20	12	73
Family Disputes 家庭	0	2	16	6	75	46	47	80	44	157
Sexual Problem 性	0	3	32	9	175	54	173	36	86	15
Social Relationship 交友	0	0	2	7	27	37	24	52	34	67
Health 健康	0	0	1	1	23	10	37	57	42	83
Mental Problem 精神問題	0	0	2	0	19	11	128	82	122	140
Finance 經濟	0	0	0	0	8	7	32	25	73	67
Occupation 職業	0	0	2	0	55	12	164	97	171	204
Study 學業	0	1	36	5	69	37	10	17	4	9
Accidents 意外	0	0	0	0	0	2	3	4	3	3
Others 其他	0	2	2	4	72	24	40	38	53	50
Total 總計	0	8	94	39	593	355	774	648	802	1066

年齡 Age	30-34 歲		35-39 歲		40-44 歲		45-49 歲		50-54 歲	
個案分類 Problems Areas	M 男	F 女	M 男	F 女	M 男	F 女	M 男	F 女	M 男	F 女
愛情 Love Relationship	158	162	52	56	61	51	3	5	2	2
婚姻 Marital Problem	66	106	21	75	61	51	7	36	24	11
家庭 Family Disputes	63	155	27	166	62	148	15	38	20	29
性 Sexual Problem	58	31	17	4	16	5	0	1	9	0
交友 Social Relationship	43	85	32	34	12	26	1	4	2	3
健康 Health	39	104	42	53	42	48	5	55	9	14
精神問題 Mental Problem	142	287	88	196	71	216	5	95	6	34
經濟 Finance	158	90	78	61	92	41	24	22	47	18
職業 Occupation	212	168	119	50	99	41	16	20	23	2
學業 Study	6	9	0	2	0	0	0	0	0	0
意外 Accidents	4	10	7	5	1	16	1	0	0	1
其他 Others	67	94	29	21	24	25	6	16	9	5
總計 Total	1016	1301	512	723	541	668	83	292	151	119

Age 年齡	55-59 歲		60-64 歲		65 歲以上		UNKNOWN 不詳		TOTAL 總數		
Problems Areas 個案分類	M 男	F 女	M 男	F 女	M 男	F 女	M 男	F 女	M 男	F 女	T 總數
Love Relationship 愛情	7	1	0	1	0	0	37	21	663	755	1418
Marital Problem 婚姻	1	3	1	0	0	0	16	6	211	385	596
Family Disputes 家庭	4	10	3	8	7	7	22	42	405	894	1299
Sexual Problem 性	0	1	1	0	0	0	40	7	607	166	773
Social Relationship 交友	1	0	0	1	0	0	6	18	184	334	518
Health 健康	2	5	1	1	6	6	13	39	262	476	738
Mental Illness 精神問題	2	1	2	2	7	3	40	80	634	1147	1781
Finance 經濟	6	1	5	6	0	7	19	19	542	364	906
Occupation 職業	6	2	2	1	0	0	31	30	900	627	1527
Study 學業	0	0	0	0	0	0	5	3	130	83	213
Accidents 意外	0	0	0	0	0	0	1	4	20	45	65
Others 其他	5	1	0	1	1	0	42	46	350	327	677
Total 總計	34	25	15	21	21	23	272	315	4908	5603	10511

(Table 1.5) Suicidal Assessment in 2001

(表一、五) 二零零一年全年求助者的自殺危機評估

Year 年份	2001 Cases 個案						2000 Cases 個案	
	M 男	(%)	F 女	(%)	Total 總數	(%)	Total 總數	(%)
Suicidal Assessment 即時自殺危機								
Imminently Suicidal 高	36	0.47	39	0.51	75	0.99	53	0.78
Suicidal with plan 中	135	1.78	138	1.82	273	3.60	229	3.36
Suicidal Idea 低	605	7.98	709	9.35	1314	17.33	1094	16.06
No Suicidal Idea 無	2713	35.79	3037	40.07	5750	75.86	5259	77.22
N/A 不適用	81	1.07	87	1.15	168	2.22	175	2.57
Total 總計	3570	47.10	4010	52.90	7580	100	6810	100

Remark: Suicidal assessment 註:即時自殺危機評估

(Imminently suicidal) 高:

(refer to those who had concrete suicidal plan, were taking action and in a disastrous situation.)

即有具體自殺計劃，而即時有自殺行動的可能性及致命性高，甚或正在進行自殺。

(Suicidal with plan) 中:

(refer to those who had concrete suicidal plans and with immediate suicidal motive but not in a disastrous situation.)

即有具體自殺計劃，即時有自殺行動的可能性但致命性不高。

(Suicidal Idea) 低:

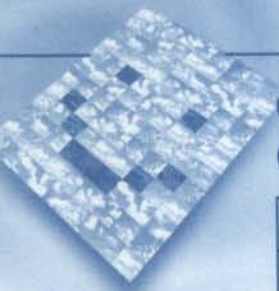
(refer to those whose suicidal ideas grew when in distress but had no concrete suicidal plan.)

即有自殺意念，但沒有具體自殺計劃，即時自殺危機低。

(No Suicidal Idea) 無:

(refer to those who had different problems and were looking for someone to talk to for emotional release and with no suicidal idea)

即沒有自殺念頭，只希望找人傾訴以紓緩情緒。



(Table 1.6) Hotline volunteers pre-service training
(表一、六) 熱線義工職前訓練

Period 時間	Training Course 課程	Number of Participants 參加人數(第一階段訓練)
5/01	35 期	49 人
10/01	36 期	74 人

(Table 1.7) Hotline volunteers in-service training
(表一、七) 熱線義工在職訓練

Month 月份	Theme 主題	Type 種類	No. of Sessions 詳數
January 1 月	Service centre for Caritas Family Service Project on Extramarital Affairs 明愛婚外情問題支援中心	Agency Visit 機構採訪	1
February 2 月	How to handle suicidal-risk case 個案研習分享會 - 高危個案	Training 訓練	1
March 3 月	Case-supervisor Training 督導員訓練工作坊	Training 訓練	4
May 5 月	How to handle financial-problem case 個案研習分享會 - 負債個案	Training 訓練	1
August 8 月	Counseling skills (NLP) in handling cases 輔導技巧講座	Training 訓練	1
September 9 月	Enneagram and Personal Growth 九型性格與輔導工作	Training 訓練	2
October 10 月	How to handle manipulative case and assertive training 操縱性個案及堅定訓練	Training 訓練	1
October 10 月	Leadership Training-Group Leaders 領袖才能訓練	Training 訓練	2
December 12 月	How to handle psychiatric case 精神病個案處理	Training 訓練	1

(Table 1.8) Life Ambassador volunteers training
(表一、八) 珍惜生命大使訓練

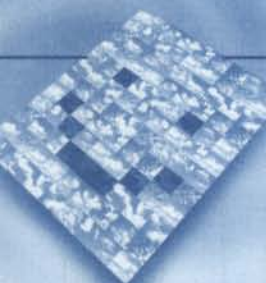
Period 時間	Training Course 課程	Number of Participants 參加人數
4/01	第一期	15 人
9/01	第二期	13 人

COMMUNITY EDUCATION 社區教育

(Table 1.9) Gatekeeper training – Suicide Prevention Workshop

(表一、九) 防止自殺工作坊

No.	Month / 2001	Theme 主題	School/Agency 學校 / 機構	Target 對象	No. of Session 詳數	Total Participant 參加總人次
1	March 三月	Suicide Prevention Workshop 防止自殺工作坊	P.O.H.80th Anniversary Tang Ying Hei College 博愛醫院八十週年鄧英喜中學	Teachers 老師	1	30
2	May 五月	Suicide risk assessment and intervention 自殺危機評估及介入	Postpartum Depression Support Project-Yang Memorial Methodist Social Service 楊震社會服務處產後抑鬱支援計劃	Women volunteers 婦女義工	1	15
3	May 五月	Children's emotional and self-destructive behavior 如何處理孩子自毀行為 / 自殺企圖	Chi Lin Buddhist secondary school 佛教志蓮中學	Parents 家長	1	30
4	June 六月	Suicide risk assessment and intervention 自殺危機評估及介入	World Vision International Lily's Women Centre 世界宣明會婦女百合中心	Women hotline volunteers 婦女熱線義工	1	13
5	September 九月	Suicidal Crisis counseling 自殺個案處理及危機介入	Sheung Shui Peace Evangelical Center Limited 上水平安福音堂	Church members 教友	1	60
6	September 九月	Suicidal crisis intervention 自殺個案處理及危機介入	Caritas Integrated Service for Young People-Cheung Chau 長洲明愛青少年綜合服務	Social Workers 社工	1	9
7	September 九月	Suicidal crisis intervention 自殺個案處理及危機介入	Women's Hotline-Yang Memorial Methodist Social Service 楊震社會服務處婦女熱線	Women hotline volunteers 婦女義工	1	20
8	September 九月	Suicidal crisis intervention 自殺個案處理及危機介入	HK Federation of Women 香港婦女中心協會	Women hotline volunteers 婦女義工	1	25
9	October-November 十月至十一月	Handling of Suicide Case (8 groups) 自殺個案處理及危機介入(共八次)	Hong Kong Police Force (Kwai Tsing District) 香港警務署葵青警區	Junior police officer 警務人員	8	400
10	November 十一月	Handling suicidal case 自殺個案處理及危機介入	Sheng Kung Hui Diocesan welfare council 聖公會教區福利協會	School social worker 學校社工	1	20
11	December 十二月	Telephone counseling 電話輔導	Salvation Army-Yau Ma Tei Multi-service Centre for the Elderly 救世軍油麻地老人社區服務中心耆老服務	Social worker 社工	1	35
Total 總數						657



(Table 1.10) Peer Counseling Group

(表一、十) 朋輩輔導

1	April 四月	Peer Counseling workshop on suicide prevention 如何有效協助身邊有自殺傾向的朋友	Salvation Army Lung Hang C&Y Center 救世軍隆亨青少年中心	Youth volunteers 青少年義工	1	15
2	July, August 七月至八月	Peer Counseling workshops on suicide prevention (3 groups in total) 朋輩輔導小組(共三個小組)	Ling Nan Hang Yee Memorial Secondary School 嶺南衡怡紀念中學	Secondary Students 中學生	9	75
3	August 八月	Peer Counseling workshops on suicide prevention 如何有效協助身邊有自殺傾向的朋友	HK Playground Association-Integrated service center for Children & Youth North Point 香港遊樂場協會北角青少年綜合服務中心	Youth volunteers 青少年義工	1	15
Total 總數:105						

(Table 1.11) Community Life Education Talks

(表一、十一) 珍惜生命講座

No.	Date 日期 (2001)	School / Organization 學校 / 機構	Target 對象	Total Participants 參加人數
1	22/2	Homantin Government Secondary School 何文田官立中學	F.1-F.7 Students 中一至中七學生	970
2	9/3	St. Bonaventure College 聖文德書院	F.1 Students 中一學生	90
3	16/3	Assembly of God Morrison Memorial School 神召會馬理信紀念學校	F.4-F.6 Students 中四至中六學生	240
4	20/3	Salvation Army Wah Fou Elderly Service Center 救世軍華富老人中心	Senior Citizens 長者	60
5	17/4	S.K.H. St. Luke's Settlement Social Center for the Elderly 聖公會聖路加福群會長者中心	Senior Citizens 長者	60
6	27/4	Ling Nan Hang Yee Memorial Secondary School 嶺南衡怡紀念中學	F.4-F.6 students 中四至中六學生	220
7	29/5	S.K.H. Lui Ming Choi Memorial Primary School 聖公會呂明才紀念小學	P.4-P.6 Students 小四至小六學生	560
8	2/6	Ap Lei Chau Kai Fong Primary School 鴨脷洲街坊小學下午校	P.5-P.6 Students 小五至小六學生	141

9	4/7	Hoi Pung School 海濱小學	P.4-P.5 Students 小四至小五學生	50
10	9/7	Sheung Kwai Chung Government Secondary School 上葵涌官立中學	F.1, F.2 & F.6 Students 中一、中二及 中六學生	300
11	30/7	Caritas HK-After school care project 明愛幼苗培育計劃	P.1-P.6 Students 小一至小六學生	120
12	18/9	SAGE Chan Tseng His Kwai Chung Multi-Service Center For the Elderly 耆康會懷熙葵涌社區老人服務中心	Senior Citizens 長者	40
13	9/10	South Tuen Mun Government Secondary School 南屯門官立中學	F.1 students 中一學生	200
14	9/11	St. Bonaventure College 聖文德書院	F.1 & F.2 students 中一至中二學生	480
15	10/11	The Church of Living Stones HK Ltd. 基督教活石堂	F.1 & F.2 students 中一至中二學生	30
16	16/11	The Salvation Army Lung Hang C&Y Center 救世軍隆亨青少年中心	Youth volunteers 青少年義工	15
17	3/12	Lingnan Hang Yee Memorial Sec. School 嶺南衡怡紀念中學	F. 5 students 中五學生	160
18	10/12	MFBM Chan Lun Chung Tak memorial School 妙法寺陳呂頌德紀念中學	F.4-F.7 students 中四至中七學生	640
				Total 總數: 4336

(Table 1.12) Community Mass Program

(表一、十二) 大型社區活動

Date 日期	Theme 主題	Venue 地點	Total participants 總參與人次
1-2/9	Exhibition— The Brave One in Life (生命的勇者)	Lok Fu 樂富	600

(Table 1.13) Support Service for HKCEE Students
(表一、十三) 沙田區中六聯招中心支援服務

Emotional support service for HKCEE(情緒支援服務) & Exhibition Service(珍惜生命宣傳活動)

	Tai Wai Center (大圍聯招中心)		Ma On Shan Center (馬鞍山聯招中心)	
	Attendant 出席人數	Cases 接案	Attendants 出席人數	Cases 接案
8/8/2001 (2:00-4:30)	563	2 (1 Parent or Friends 父母 或朋友; 1 Student 學生)	259	13 (8 parents/friends 父母或 朋友; 5 students 學生)
9/8/2001 (9:00-1:00)	50	14 (8 parent/friends 父母 或朋友; 6 student 學生)	228	31 (15 parents/friends 父母 或朋友; 16 students 學生)
Total 總數:	613	16 cases 個案	487	44 cases 個案

(Table 1.14) Mass Media
(表一、十四) 傳媒

No.	Date(2001)日期	Program 詳目名稱	Agency 主辦機構
1.	7/1	City Forum 城市論壇	RTHK 香港電台電視部
2	17/1	Work Happily 越做越開心	Commercial Radio 商業電台
3	16/3	Sunday File 星期日檔案	TVB 無線電視
4	8/5	The Biggest World 世界自然大	Commercial Radio & Ming Pao 商業電台與明報合辦
5	22/5	Teapot in Storm 風波裡的茶杯	Commercial Radio 商業電台
6	27/5	With Love 有情有義	Commercial Radio 商業電台
7	5/6	News Forum 時事相對論	Metro Radio 新城電台
8	14/6	No Taping 不准錄音	Commercial Radio 商業電台
9	7/8	Good Morning 醒晨	Commercial Radio 商業電台
10	9/8	A Good Man 正是有心人	Commercial Radio 商業電台
11	5/9	News Hit 時事追擊	ATV 亞洲電視
12	17/9	Newsline	ATV World 亞洲電視英文台
13	21/9	Asia Morning 亞洲早晨	ATV 亞洲電視
14	16/10	Happy Alarm 開心大鬧鐘	Metro Radio 新城電台
15	5/11	A Bright Road 陽光大道	RTHK 香港電台
16	9/11	Tuesday File 星期二檔案	TVB 無線電視

(Table 1.15) Publications

(表一、十五) 出版

Month月(2001)	Nature性質	Theme主題
January一月	Newsletter 39th 會訊第39期	Extra-marital affairs 婚外情
May五月	Newsletter 40th 會訊第40期	Teenage Suicide 青少年自殺
June六月	Annual Report 年報	2000 annual report-SBHK 二零零年年報
September九月	Newsletter 41st 會訊第41期	Gambling and suicide 賭博

(Table 1.16) Use of Web

(表一、十六) 網頁使用

Date(2001)日期	No. of Total Visitors 訪客人數
January to December 一月至十二月	18,988 visitors 訪客

Chiang Chi-wai, Nelson

Vice-Chairman & Public Relations Officer

Parkson Pong

Translator

According to the Census and Statistic Department, the estimated Hong Kong Resident Population at the end of 2001 was 6,759,500. And the Coroner's Court in 2001 reported 988 cases of suicide death, with a marked increase of 73 deaths. Among them, there was an increase of 44 male and 29 female deaths. The male-to-female ratio was 1.7:1, which is exactly the same as last year. (Table 2.2)

The suicide rate in 2001 was 14.7, which is 1.2 higher than 2000. In the past 10 years, the suicide rates in Hong Kong were around 10 to 13. However, the figures peaked at 13.5 and 14.7 in last year and this year respectively. The relevant government departments should pay their grave attention to it. (Table 2.1) The suicide trend in Hong Kong is in perfect accord with the assumption made in the west: Suicide possibility raises side by side with age. And the men's suicide rate stands a bit high and men tend to use extremely deadly ways to end it all. Among the deaths, 26% were unemployed people, it was higher than the 25% in last year, while in this year, unemployment rate was up for 0.2 %. It shows unemployment has something to do with suicide.

Suicide Figures by Age and Sex

Age Group: 0-19

In 2001, Suicide took 32 lives below the age of 19. The suicide rate was 3.7 and the male-to-female ratio was 1.1:1 (Table 2.2).

Compared to 2000, a rise of 0.8 in suicide rate is found in this age group. In terms of number, it also raised from 26 in 2000 to 32 in 2001. Men's rate is higher than women's. Among the 32 deaths, 27 ended their lives by jumping from high places (84%) and 3% of the people hung themselves. This year 4 people took carbon monoxide when compare with only 1 in previous year, which counted for 12.5% of the total. You can tell jumping from high places, a radical and extremely deadly method, is the choice of the majority.

In addition, according to the Education Department, the student population registered 19 cases of suicide (same as 2000) and attempted suicide soared from 5 cases in 2000 to 18 cases in 2001. The striking upsurge of student suicide really calls for an immediate concern and action from the educational authorities. (Table 2.3)

Age Group: 20-59

In 2001 suicide terminated the lives of 685 people, which was 65% of the total deaths and 1% higher than 2000 (Table 2.1). The suicide rate was 16.4 and the male-to-female rate was 11.9: 1.

Again, in this age group, the majority chose jumping from high places (40%) and carbon monoxide (34%). Obviously, carbon monoxide has replaced hanging and become the second most frequently used suicide means. Besides, 32 people took drugs to end their lives, there were 10 more deaths when compare to 22 victims in 2000. Among the 685 suicides, unemployed people, with a total of 278, committed 40% of the suicides. 79% of the deaths were men, 21% were women. It is noteworthy that cases jumped from 137 in 2000 to 171 in 2001 among the aged 20-29 while cases dropped from 114 in 2000 to 104 in 2001 among the aged 50-59.

Age Group: 60 or Above

270 people killed themselves in this age group in 2001, representing a 27% share of the total and a 1.1% up in comparison with 2000. The male suicide rate was 27 and the male-to-female ratio was 1.5:1.

Suicide Figures by Type of Suicide

Among all the suicide means, 430 jumped from high places (44%); next, 250 took carbon monoxide (25%), a marked rise of 61.6% when compare to 154 deaths in 2000; on the contrary, hanging fell from 261 to 201 cases (20%)(Table 2.1)

On the whole, suicide means is similar in all age groups. Jumping from high places still ranks top. Taking carbon monoxide has replaced hanging and become the second most frequently used method, especially among the age group 20-59. It is outstandingly high among others.

Suicide Figures by Occupation

In 2001, 379 unemployed people committed suicide. This made up 38% of the total suicides. Housewives came second, altogether 136, amounting to 14% (Table 2.4). In 2001, the unemployment rate and the underemployment rate in Hong Kong was 5.1 and 2.5 respectively. The former went up 0.2% and the latter went down 0.3. The suicide figures of the unemployed have been going up in the past years, it is clear that there is a correlation between unemployment and suicide. Should a conclusion be made, further analysis is needed, though.

Suicide Figures of People with Mental Disorders

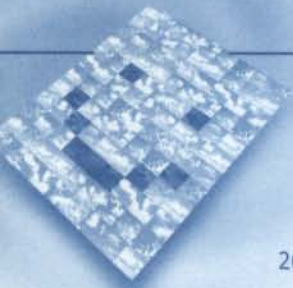
275 suicide cases in 2001 were associated with mental disorders, which committed 30% of the suicides. It showed 2% more suicides than the previous year (Table 2.5). The male-to-female ratio was 0.9:1. That means women's suicide rate was higher than men's in this group. Among the 275 deaths, 217 came from the 20-59 age group. It accounted for 32% of the total deaths in this age group. The major suicide methods are jumping from high places (157 deaths, 57%), hanging (45 deaths, 16%) and taking carbon monoxide (38 deaths, 14%)

In the past few years, more than 30% of suicides are related to mental problems. The trigger of mental problems has a lot to do with the stressful life in Hong Kong. Especially serious mental problems like serious depression and schizophrenia are key factors leading to suicide. However, it does not mean that majority of the suicidal people have mental problems. Since Hong Kong is having an economic hardship and Hong Kong citizens are shouldering heavy pressure, mental and psychological health emerge as the top concern in the territory.

Unknown or Unidentified Suicide Cases

In 2001, 71 cases were classified under this category, with a marked fall from 140 cases in last year. The male-to-female ratio was 1.5: 1 and 24 people in this group were related to mental problems. 37 people out of the total 71 jumped from high places and got killed. (Table 2.6)

In the light of the fact that jumping from high places is the most popular suicide means,



quite a number of these 37 cases might be suicide cases. Therefore, suicide cases in 2001 may exceed 1000.

Conclusion

There were 988 people committed suicide in 2001. The suicide rate was 14.7, 1.2 point higher than that of the 2000 and the highest in recent years. The male-to-female rate was 1.7:1. Compared to other countries, Hong Kong always has a high women suicide rate, especially among the age group 30-49. This deserves our uttermost concern. As for the suicide means, jumping from high places is still the first choice. Taking carbon monoxide has ranked second. 38% of the suicides were jobless people; 30% were connected with mental problems. As the economy and the living standard in Hong Kong keep going downhill, everyone in the community is under intense stress. Although our suicide prevention hotlines can cure, however, prevention is always better than cure. Now the problems are getting deeper roots, it is time for the SAR government to show its commitment and react promptly to save the situation in Hong Kong.

~The end~

Reference 參考資料

1. Demographic Statistic Section, Census and Statistic Department (統計處人口統計組) (2001) 2001 Year End Population, Hong Kong Administrative Region Hong Kong
2. The Samaritan Befrienders Hong Kong (香港撒瑪利亞會防止自殺會) (1999). The Samaritan Befrienders Hong Kong Annual Report 1999, Hong Kong.
3. The Samaritan Befrienders Hong Kong (香港撒瑪利亞會防止自殺會) (2000). The Samaritan Befrienders Hong Kong Annual Report 2000, Hong Kong.
4. Coroners Court (死因裁判法庭) (1999). Coroners Report 1999 HK
5. Coroners Court (死因裁判法庭) (2000). Coroners Report 2000 HK
6. Coroners Court (死因裁判法庭) (2001). Coroners Report 2001 HK.
7. Careers and Guidance Service Section, Education Department (教育署就業及輔導處) (1999) Information on Student Suicide 1998/1999 School Year. Hong Kong Special Administrative Region Hong Kong
8. Careers and Guidance Service Section, Education Department (教育署就業及輔導處) (2000) Information on Student Suicide 1999/2000 School Year. Hong Kong Special Administrative Region Hong Kong
9. Careers and Guidance Service Section, Education Department (教育署就業及輔導處) (2001) Information on Student Suicide 2000/2001 School Year. Hong Kong Special Administrative Region Hong Kong

蔣志偉

(副主席兼公關)

根 據香港特區政府統計處資料指出，在二零零一年一月一日至二零零二年十二月三十一日為止，已登記之總人口為六佰七十五萬九仟伍佰人(二零零一年底估計數字)。而同年之香港死因裁判法庭報告顯示共有九佰八十八人被裁定為死於自殺(見表二、一)。較去年九佰一十五人增加達七十三人之多，其中男性自殺死亡人數較去年多出四十四人，而女性自殺死亡人數亦相對多出二十九人。男女自殺比率為一點七比一，與去年比率完全相同(見表二、二)。

以全港人口六佰七十五萬九仟伍佰人(二零零一年底估計數字)，二零零一年的自殺率是十四點七，較二零零零年上升一點二。過去十年，香港的自殺率徘徊於十至十三之間，然而上年與今年均超越十三點五至十四點七之高位，此情況極需特區政府以及有關部門的關注(見表二、一)。香港的自殺死亡現象仍然是自殺率隨年齡上升而增加，這與外國假設自殺率隨著年齡的增長而上升吻合。又男性自殺率偏高，較多採用高度致命的方法及自殺死亡者有近二成六為失業人士，這與上年的二成五較高，而該年度的失業率為五點一較去年的四點九上調零點二，均顯示著自殺與失業是有關聯存在。

按年齡及性別分組的自殺統計數字

年齡組別：零至十九歲名

二零零一年共有三十二名年齡在十九歲以下的青少年自殺死亡，自殺率是三點七，男女自殺比率為一點一比一(見表二、二)。

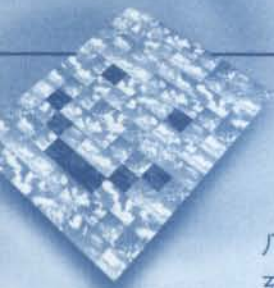
與二零零零年比較，此年齡組別的自殺率較去年上升零點八，人數亦由零零年的二十六人上升至零一年的三十二人，而其中男性自率較女性為高。三十二名自殺死亡者中，二十七名選擇從高處墮下來結束生命，佔該年齡組別死人數的百分之八十四。吊死者則為百分之三，然而採用一氧化碳者卻由去年的一名增至零一年的四名，佔百分之十二點五，在此大部份自殺者均採用高處墮下的激烈致死方法。

另外根據教育署所提供資料，二零零一年共有十九宗學生自殺死亡個案，與去年數字相同，而學生企圖自殺死亡個案，則由零零年的五宗上升至零一年的十八宗，在此學童自殺個案數字的大幅上升極需教育當局留意(見表二、三)。

年齡組別：廿至五十九歲

二零零一年共有六佰八十五名年齡介乎廿至五十九歲人士自殺死亡，佔總自殺死亡人數的百分之六十九，較二零零零年上升一個百分點(見表二、一)，自殺率是十六點四，男女自殺比率是一點九比一。

同樣，在此年齡組別的自殺死亡者中，最多人士選擇從高處墮下(百分之四十)及一氧化碳(百分之卅四)。十分明顯的是，一氧化碳自殺死亡數字已取代吊死(百分之十五)而為第二類最多人採用的自殺方式。除此之外，採用藥物來結束生命者有卅三人，較零零年之廿二人增加達十人之多。又自殺死亡的六百八十五人中，失業人士佔去二百七十



八人(百分之四十)，男性佔百分之七十九，女性則佔百分之廿一。值得注意的是其中20至29歲組別由二零零零年的一百卅七人增至二零零一年的一百七十一人，反之，50至59歲組別卻由二零零零年的一百一四人下降至二零零一年的一百零四人。

年齡組別：六十歲或以上

這個年齡組別於二零零一年共有二百七十人自殺死亡，佔總自殺死亡人數的百分之廿七，所佔百分比相對零零年上調約一點一個百分點，自殺率是廿七。男女比例是為一點五比一。

按自殺方法分組之自殺統計數字

從各種自殺方式中，共有四百卅人選擇從高處墮下，佔總自殺死亡人數的百分之四十四，其次是一氧化碳(共二百五十人，佔總自殺死亡人數的百分之廿五)，與零零年相比(共一百五十四人，其升幅達六十一點六個百分比)反之，吊死卻由零零年的二百六十人下降至二零一人，佔總自殺死亡人數的百分之二十(見表二、一)。

整體來說，各年齡組別的男女在選擇自殺方式上大致相同，然而採用自殺之方式類別中，除由高處墮下依舊最多人選擇外，一氧化碳自殺現已取代上吊成為第二類最多人採用的自殺方法；其中又以廿至五十九歲組別選取一氧化碳自殺所佔的人數遠比其它年齡組別為高。

按職業分組的自殺統計數字

在二零零一年，共有三百七十九名自殺死亡者為失業人士，佔總自殺死亡之人數的百分之卅八，而家庭主婦則續居第二位，共有一百卅六人，佔百分之十四(見表二、四)。二零零一年香港的平均失業率約五點一，就業不足率為二點五，整體數字較去年的四點九的失業率略為上調零點二，然而就業不足率就由零零年的二點八下調零點三，至二點五。在此，失業者的自殺數字逐年遞增，這與自殺和失業不無關係，惟雖進行詳細資料分析才能評定其中關聯。

按精神病分組的自殺統計數字

二零零一年共有二百七十五自殺死亡人士與精神病有關，佔總自殺死亡人數的百分之卅，較零零年上升兩個百分點(表二、五)，男女比例為零點九比一，即女性的自殺數目較男性為高。二百七十五人中，二百一十七人屬於二十至五十九歲的年齡組別，佔該年歲組別死亡之總人數的百分之卅二，主要的自殺方式是從高處墮下(一百五十七人，佔百分之五十七)及吊死(四十五人，佔百分之十六)，隨著的是一氧化碳(卅八人，佔百分之十四)。

過去數年，均有超過三成自殺死亡人士與精神病有關，精神病的誘發與香港的生活壓力有著莫大的關係，尤以患上嚴重性精神病如嚴重抑鬱症與及精神分裂症等均是引致

自殺的高風險因素。但這也不代表大部份自殺人士均有精神病傾向。然而隨著香港的民生與經濟持續低迷不濟，民眾所承受的整體壓力不小，因此大眾的精神健康與心理衛生的關係是不容忽略的。

未能確定是否蓄意自殺的死亡個案

在二零零一年，共有七十一人被列為不能確定是否蓄意自殺的死亡個案，較零零年的一百四十宗下調達六十九人之多。男女比例是一點五比一，其中廿四人與精神病有關。在七十一人中，有三十七人因高處墮下而死亡(見表二、六)。

故此，考慮到最多人採用的自殺方法是高處跳下。在這三十七宗個案中可能有不少個案是自殺性質，因此，二零零一年自殺死亡的個案數字其實可達一仟宗以上。

總結

二零零一年的自殺死亡人數是九百八十八人，自殺率為十四點七，較零零年上升一點二，是近年自殺率的新高。其基本特徵相差不大。自殺死亡者的男女比例是一點七比一，與其他國家相比，香港女性自殺率一向偏高，尤以卅至四十九歲的女性的自殺比例較其它年齡組別為高，因此不容忽視。至於主要自殺方式除高處墮下仍為最多人採用外，吊死已被一氧化碳取代為其次最多人選擇的自殺方式。自殺死亡者中百分之卅八為失業者，而百分之卅則與精神病有關。隨著香港就業，經濟以及一般民生狀況持續幾年未有好轉，對普羅大眾均帶來極大壓力，然則防止自殺熱線與自殺危機處理中心雖能防止最壞的可能性，但卻只能治標不治本，現今危機已呈深化，香港特區政府的全面承擔與統籌實是急不容緩！

~完~

參考資料

1. Demographic Statistic Section, Census and Statistic Department (統計處人口統計組) (2001) 2001 Year End Population, Hong Kong Administrative Region Hong Kong
2. The Samaritan Befrienders Hong Kong (香港撒瑪利亞會防止自殺會) (1999). The Samaritan Befrienders Hong Kong Annual Report 1999, Hong Kong.
3. The Samaritan Befrienders Hong Kong (香港撒瑪利亞會防止自殺會) (2000). The Samaritan Befrienders Hong Kong Annual Report 2000, Hong Kong.
4. Coroners Court (死因裁判法庭) (1999). Coroners Report 1999 HK
5. Coroners Court (死因裁判法庭) (2000). Coroners Report 2000 HK
6. Coroners Court (死因裁判法庭) (2001). Coroners Report 2001 HK.
7. Careers and Guidance Service Section, Education Department (教育署就業及輔導處) (1999) Information on Student Suicide 1998/1999 School Year. Hong Kong Special Administrative Region Hong Kong
8. Careers and Guidance Service Section, Education Department (教育署就業及輔導處) (2000) Information on Student Suicide 1999/2000 School Year. Hong Kong Special Administrative Region Hong Kong
9. Careers and Guidance Service Section, Education Department (教育署就業及輔導處) (2001) Information on Student Suicide 2000/2001 School Year. Hong Kong Special Administrative Region Hong Kong

(Table 2.1) The Number of Suicide Death in Hong Kong
(表二、一) 香港自殺死亡數字 (按自殺方式、年齡及性別分組)

Year	2001													2000		1999	
	Type of Suicide 自殺類別	Age Groups 年齡組別												Total 小計	Total 小計	Total 小計	Total 小計
		Sex M 男 F 女	0-9	10-19	20-29	30-39	40-49	50-59	60-69	70+	不詳	小計 4	Total 4				
2001	Firearms 火器	M 男			1		2	1				4	4	1	1	2	2
		F 女												0		0	
	Drugs 藥物	M 男			8	5	2	1		2		18	33	6	22	9	20
		F 女			2	4	7	2				15	16	16		11	
	Poisons 毒藥	M 男						2	1	2		5	16	10	19	11	26
		F 女						2	4	4		11		9		15	
	Hanging 吊死	M 男	1	10	14	32	16	16	20	45		138	201	174	260	176	250
		F 女			2	9	12	7	6	27		63		86		74	
	Jumping from a height 由高處墮下	M 男	15	53	39	42	33	33	30	41		253	430	236	408	240	418
		F 女	12	25	30	33	16	22	39			177		172		178	
	Gas Fatality 氣體中毒	M 男					1	1				2	2	5	5	0	0
		F 女												0		0	
2001	Carbon Monoxide 一氧化碳	M 男	1	41	52	41	15	4	5			159	250	105	154	66	89
		F 女	3	24	35	25	2	1	1			91		49		23	
	Drowning 淹死	M 男			1	2	3		2	4		12	27	12	28	13	24
		F 女			3	2	2		4	3	1	15		16		11	
	Sharp Instruments 利器	M 男				2						2	6	5	7	4	6
		F 女				1			2	1		4		2		2	
	Others 其他	M 男			1	4	5	5				15	19	10	11	36	47
		F 女			1	1	2					4		1		11	
	Sub-total 小計	M 男	17	114	117	127	77	77	57	99		608	988				
		F 女	15	57	84	82	27	39	75	1		380					
	Total 總計		32	171	201	209	104	96	174	1		988	988				
2000	Sub-total 小計	M 男	0	14	86	110	135	66	48	105	0			564			
		F 女	0	12	51	65	64	48	36	75	0			351			
1999	Total 總計		0	26	137	175	199	114	84	180	0				915		
	Sub-total 小計	M 男	1	13	66	133	109	76	68	91	0					557	
		F 女	0	12	42	64	56	35	37	79	0					325	
	Total 總計		1	25	108	197	165	111	105	170	0						882

Source: Coroners Court 資料來源：死因裁判法庭

(Table 2.2) The Suicide Rate* of Hong Kong (By Age and Sex)
(表二、二) 香港自殺率* (按年齡及性別組別)

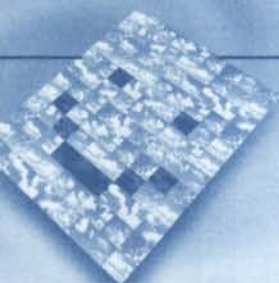
	Age Group 年齡組別	2001				2000				1999			
		M 男	F 女	Ratio 比例	Total 總數	M 男	F 女	Ratio 比例	Total 總數	M 男	F 女	Ratio 比例	Total 總數
0-19	0-9	0.0	0.0	0.0	0.0	0.0	0.0	0:0	0.0	0.3	0.0	0:0	0.1
	10-19	3.78	3.5	1.1:1	3.7	3.0	2.7	1.1:1	2.9	2.9	2.8	1.0:1	2.9
	Subtotal Population 整體人口	2.1	2.0	1.1:1	2.06	1.7	1.5	1.1:1	1.6	1.7	1.6	1.1:1	1.6
20-59	20-29	24.5	10.8	2.3:1	17.2	18.5	10.4	1.8:1	14.4	13.3	7.8	1.7:1	10.4
	30-39	20.6	12.0	1.7:1	15.8	18.9	9.0	2.1:1	13.8	19.8	9.1	2.2:1	14.3
	40-49	21.0	13.4	1.6:1	17.1	23.0	10.3	2.2:1	16.4	16.9	9.4	1.8:1	13.3
	50-59	21.2	8.2	2.6:1	15.1	18.6	14.7	1.3:1	16.7	20.4	11.2	1.8:1	16.2
60+	Subtotal Population 整體人口	21.7	11.5	1.9:1	16.4	20.7	10.6	2.0:1	15.1	17.2	9.1	1.9:1	13.4
	60-69	21.7	16.3	1.3:1	19.2	18.3	14.3	1.3:1	16.4	24.6	14.4	1.7:1	19.7
	70+	45.0	26.5	1.7:1	34.6	/	/	/	/	/	/	/	/
	70-79 (2000 & 1999)	/	/	/	/	42.3	24.7	1.7:1	32.8	41.3	23.7	2.1:1	31.9
	80+	/	/	/	/	63.6	29.3	2.2:1	42.1	41.4	36.3	1.1:1	38.2
	Subtotal Population 整體人口	32.4	22.0	1.5:1	27.0	31.7	20.7	1.5:1	25.9	12	21.5	1.5:1	26.5
	Total Population 全年整體人口	18.5	11.1	1.7:1	14.7	17.0	10.1	1.7:1	13.5	15.9	9.4	1.7:1	12.6

* Suicide Rate equals to number of suicide death per 100,000 population per year.

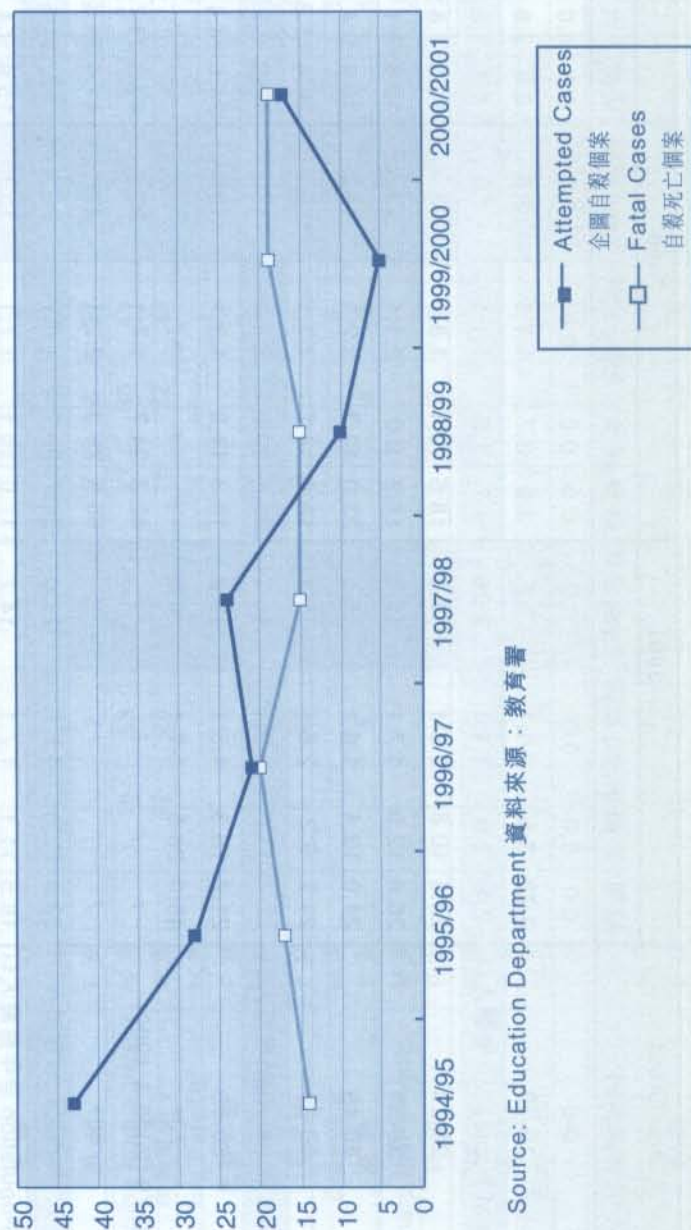
* 自殺率等於每 100,000 人口每年自殺死亡的人數

Calculation: The Samaritan Befrienders Hong Kong

資料計算：香港撒瑪利亞防止自殺會



(Figure 2.3) Number of Student Suicide in Hong Kong
(圖二、三) 香港學童自殺個案



Source: Education Department 資料來源：教育署

(Table 2.4) The number of Suicide Death in Hong Kong 2001 (By Occupation)
(表二、四) 香港自殺死亡數字 (按職業分組)

2001																		2000		1999	
Age Groups 年齡組別																					
	Sex	0-9	10-19	20-29	30-39	40-49	50-59	60-69	70-79	不詳	小計	Total	小計	Total	小計	Total					
Student 學生	M 男		12	2							14	27	12	25	11	22					
	F 女		9	4							13		13		11						
Teacher 教師	M 男				1	1					2	6	3	3	2	5					
	F 女			1		1	2				4		0		3						
Unemployed 失業者	M 男		3	62	56	65	36	20	44		286	379	286	366	251	358					
	F 女		3	15	21	20	3	10	21		93		80		107						
Housewife 家庭主婦	M 男											136	1	157	0	116					
	F 女		1	5	28	32	15	22	33		136		156		116						
Blue Collars 藍領階層	M 男			10	8	15	10	5	2		50	58	31	34	30	32					
	F 女			4		4					8		3		2						
White Collars 白領階層	M 男			9	8	3	2	1			23	45	10	27	13	28					
	F 女			7	12	3					22		17		15						
Patient 病人	M 男				1	2	1	2	3		9	16	0	4	0	0					
	F 女			1	1		1	2	2		7		4		0						
Disciplinaries 紀律部隊	M 男			3	2	6	1				12	13	7	7	9	9					
	F 女			1							1		0		0						
Business Man 商人	M 男			3	3	6	3	2			17	20	12	14	21	23					
	F 女				1	1	1				3		2		2						
Other 其他	M 男		2	25	38	29	24	27	50		195	288	220	296	220	289					
	F 女		2	19	21	21	5	5	19	1	93		76		69						
Sub-total 小計	M 男		17	114	117	127	77	57	99	0	608	988	564	915	557	882					
	F 女		15	57	84	82	27	39	75	1	380		351		325						
Total 總計			32	171	201	209	104	96	174	1	988	988		915		882					

Source: Coroners Court
資料來源：死因裁判法庭

(Table 2.5) The number of Mental Suicide in Hong Kong 2001 (By Type, Age & Sex)

(表二、五) 香港精神病患者自殺死亡人數 (按自殺方式、年齡及性別分組)

Year	Type of Suicide 自殺類別	2001												2000		1999	
		Age Groups 年齡組別												小計	Total	小計	Total
		Sex	0-9	10-19	20-29	30-39	40-49	50-59	60-69	70+	不詳	小計	Total				
2001	Firearms 火器	M 男										0	0	0	0	0	0
		F 女										0	0	0	0	0	0
	Drugs 藥物	M 男			5		2	1				8	14	1	7	5	8
		F 女			1	1	3	1				6		6		3	
	Poisons 毒藥	M 男							1			1	3	0	3	1	9
		F 女							1	1		2		3		8	
	Hanging 吊死	M 男			3	3	8	3	3	3		23	45	41	67	26	49
		F 女				3	6	3	3	7		22		26		23	
	Jumping from a height 由高處墮下	M 男		5	24	17	11	10	3	5		75	157	67	142	72	150
		F 女		3	15	21	17	8	9	9		82		75		78	
	Gas Fatality 氣體中毒	M 男						1				1	1	1	1	0	0
		F 女												0		0	
2001	Carbon Monoxide 一氧化碳	M 男			5	6	3	2				16	38	5	11	4	7
		F 女			3	8	9	1	1			22		6		3	
	Drowning 淹死	M 男					1					1	5	4	14	3	7
		F 女				1			2	1		4		10		4	
	Sharp Instruments 利器	M 男											2	2	2	0	0
		F 女				1			1					0		0	
	Others 其他	M 男			1	4	1	3				9		5	5	4	7
		F 女					1					1	10	0		3	
	Sub-total 小計	M 男	0	5	38	30	26	20	7	8	0	134					
		F 女	0	3	19	35	36	13	17	18	0	141	275				
	Total 總計		0	8	57	65	62	33	24	26	0	275	275				
2000	Sub-total 小計	M 男	0	1	30	30	37	13	6	9	0			126			
		F 女	0	2	20	23	27	25	14	15	0			126			
1999	Total 總計		0	3	50	53	64	38	20	24	0			252			
	Sub-total 小計	M 男	0	2	23	39	29	11	6	5	0					115	
		F 女	0	4	22	34	29	17	8	8	0					122	
	Total 總計		0	6	45	73	58	28	14	13	0					237	

Source: Coroners Court 資料來源：死因裁判庭

(Table 2.6) Injury undetermined whether accidentally or purposely inflicted
(表二、六) 未能確定是意外或故意造成的損傷

Year	2001												
Type of Suicide 自殺類別	年齡組別 Age Groups												
	Sex	0-9	10-19	20-29	30-39	40-49	50-59	60-69	70+	不詳	小計	Total	
2001	Firearms 火器	M 男									0	0	
		F 女									0		
	Drugs 藥物	M 男				2	1	1	1		5	6	
		F 女					1				1		
	Poisons 毒藥	M 男									0	3	
		F 女			1		2				3		
	Hanging 吊死	M 男									0	0	
		F 女									0		
	Jumping from a height 由高處墮下	M 男		2	8	6	3	2	1	2	1	25	37
		F 女		1	2	1	2	1	1	4		12	
	Gas Fatality 氣體中毒	M 男									0	0	
		F 女									0		
	Carbon Monoxide 一氧化碳	M 男									0	0	
		F 女									0		
	Drowning 淹死	M 男			1	3	1	1	2	1	9	19	
		F 女			3	2	1	1	2	1	10		
	Sharp Instruments 利器	M 男				1					1	1	
		F 女									0		
	Others 其他	M 男								2	2	5	
		F 女	1		1					1	3		
Sub-total 小計	M 男	0	2	9	12	5	4	4	5	1	42	71	
	F 女	1	1	7	3	6	2	3	6	0	29		
Total 總計		1	3	16	15	11	6	7	11	1	71	71	
2001													

Source: Coroners Court 資料來源：死因裁判法庭

Chiang Chi-wai, Nelson

(Vice chairman & Public Relations Officer)

Parkson Pong

(Translator)

Unemployment rate stands high. Besides 911, the cooling down of the global economy and the coming of the knowledge-based economy has indeed upheavalled the rules of the job market game. This is quite a serious blow in which loads of employees have lost their jobs and are unable to find any suitable posts.

Under these circumstances, it is easy to feel blue and depressed. The degree may vary, however, the effect is always negative. Once get sacked, one is hampered financially and mentally, especially mentally. The invisible hand of pressure always comes in pairs with unemployment. The longer you are idle, the heavier the pressure is. Stress and setback are amplifying. Sense of inferiority and pressure will grow hand in hand. People tend to desert themselves from others, stay most of their time at home, and reduce or cut entirely their social life. In the long term, their mental health will diminish, adding fuel to the unemployment flames.

No matter what you are feeling, unemployed people have to face the music. Give up any wishful thinking. Friends and relatives may try their best to help. You, however, are the one who must stand up to the hardship.

To turn the darkest night into the brightest day, the first thing for the unemployed to do is to calm down their rugged emotions. Since jobless days are pressure days, therefore, jobless people should relax themselves and take up a let-it-be attitude, which may be a good mental and physical shield. Above all else, you are not the only victim. Remember thousands of people are in the same boat, they are struggling for survival and they share your feelings. You need not feel lonely and helpless. Worries will eat you and waste you a lot of energy. If you do not fight back, how can you manage to survive the hardship and the heavy load that consumes your spirit and soul during the job-seeking period?

As I mentioned above, friends and family are for you. If you stay away from them, you are making the biggest mistake. If you do not have a job at the moment, stay with people. After all, a better network may give you a better chance of getting a job. More importantly, sharing with friends or counselors can help you release your anxiety and anger. When you have your say, your heart will be lighter. When you take a load off your mind, you can make sensible decisions along your path.

If you have no one to talk to, you still have alternatives. You can write down your feelings. Or you can do aerobic exercise and let your sweat take away your sadness. Moreover, when you do aerobic exercise, Endorphins will be released in your body, which is natural morphine. It will make you feel relieved and relaxed. Why hesitate?

In the rat race, getting fired some day is the only thing you can be sure. Never feel humiliated, depressed or even suicidal just because you have a humble job or do not have one at all. Remember: to die so as to save face is a disgrace; to live, an honour.

蔣志偉

(副主席兼公關)

執筆之時，正是失業率高企的時候，這些現象的產生，除了受到「九一一」事件以及全球經濟活動放緩等外圍因素影響，也因著經濟轉型與及知識型經濟的出現，使人力市場的技能需求和標準作了極大的轉向與改變，從而帶來一定的沖擊。很多就業者便在這種轉變與調整中失掉了工作，亦再難以找回合適的崗位。

面對如斯境況，情緒低落、意志消沉的出現是少不免的。失業給人帶來的衝擊，雖然會因失業者本身情況的不同而有所分別，但它的影響卻總是負面的多。一旦失業，無論物質與精神生活，都會受到不同情度的影響，尤其在精神上，無形的壓力會隨著失業而至。失業時間越長、壓力便越大，焦慮不安與挫敗感亦會慢慢累積，就在自卑感作祟和經濟壓力增加下，人會因此而減少或刻意逃避各種社交活動，甚至只想躲在家中，不願見人，長此不安心理健康必然受損，在長期失業之困苦上徒添風霜。

在這裡，無論你的心情如何，失業者必須立即面對現實，不要有任何不切實際的幻想。親友或可能會盡力幫忙，最終解決困難還得靠自己。

為了使自己能「順利過度」失業的日子，失業者首要是盡快使自己的情緒平伏下來。要知道在失業期間，你可能要承受極大的壓力，因此，無論在生理、心理上，你都要作好準備，盡量放鬆自己，以輕鬆的態度處之。首要明白的是，失業並非只是你一人，還有數以萬計的失業大軍，正與你一樣，努力求存，大家境況相同，感受相似，你便不會再強烈地感到寂寞無助。記著，若終日憂心忡忡，坐立不安，只會消耗大量精神與體力，這樣你又怎會有能力應付失業期間的艱苦與求職活動對大量精力與心思的需要！

如前所說，親友多會盡力幫你一把。遠離家人與朋友孤軍作戰，是失業者之大忌。失業期間，需要多與人接觸，除了擴闊交際網絡有助獲得工作機會外，更重要的事，透過向親友甚至輔導員盡情傾吐，能把大部份鬱悶、苦惱、憤怒渲洩，讓這些有損身心健康的心事吐了出來，心情也變得輕快平靜。情緒安穩下來，思維才能啟動，人就可以計劃各項應變措施。

若傾訴心事不是現在能即時做到，其他釋放心事的方法，包括寫出來，或透過作帶氧運動讓不快情緒隨呼吸及汗水流走。再且，當進行有氧氣運動時，人體內會釋放出(Endorphins)，即天然之嗎啡，功用是使人身心舒暢，感到快樂，因此何不多些做呢？

請記著，在這個年代，人浮於事，失業容易找工作難。不要因失業或只能找到職位低收入薄的工作感到尊嚴受損，而鬱結消沈，並有自殺的想法。用生命來捍衛尊嚴，只是貶低生命的價值，能活下去才有尊嚴。

珍惜生命大使成立了已有一年，現正積極參與本會社區教育工作

Volunteer group named "Life Ambassador" was set up to promote "Positive Life" in community.



2001年會員大會大合照
Group photo of 2001 AGM.

第36期義工訓練營大合照

Group photo of 36th
Volunteer Training Camp.





明愛幼苗培育計劃的小朋友透過聽故事齊齊學習愛惜生命

A Group of lovely children learned how to "Save Life".

在過去一年本會先後在樂富商場及順利村舉行「生命的勇者」展覽

Exhibition called "The Brave One in Life" was held.



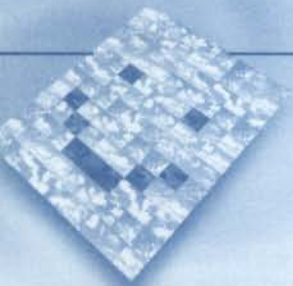
珍惜生命大使到學校提供生命教育講座，透過話劇向同學帶出珍惜生命訊息

We outreached to schools to promote "Positive Life" via variety of means such as drama.

本會服務協調主任鍾月嬌小姐曾向香港警務處葵青警區的警務人員進行處理自殺個案的培訓

We provided trainings on "Handling suicide case" to JPC of Hong Kong Police Force.





為了加強處理個案的能力，義工定期都會進行個案研習

Volunteers in-service training held periodically for improving volunteers' skills in handling cases.



本會主席黃祐榮先生致送紀念品予社會福利署署長林鄭月娥女士，以多謝林太蒞臨本會週年會員大會

Chairman, Mr. Robert Wong thanks the honour presence of Mrs. Lam (Director of Social Welfare) in 2001 AGM.

香港撒瑪利亞防止自殺會

社會福利署署長林鄭月娥女士頒發長期服務獎予本會已服務超過20年的義工

Mrs. Lam (Director of Social Welfare) helps to present souvenir to volunteers who have been providing service in SBHK over 20 years.



香港撒瑪利亞防止自殺會

2389 2222



沙田大圍聯招中心中五會考放榜支援服務 Supportive service for HKCEE students

委員、職員與出席週年大會顧問及嘉賓合照

A Group photo of 2001 AGM.



本會服務協調主任鍾月嬌小姐於2001年1月7日代表出席城市論壇，分享如何面對逆境。

Our service coordinator attended "City Forum" on 7/1/01 to share how to cope with adversity with the public.

2001年的週年聚餐，大家高興與聚首一堂輕鬆下

We got a happy moment in 2001 Annual Dinner.



記者會

在記者會上本會公佈去年自殺死亡數字是歷年最高的一年

We reported the suicide rate of this year was the highest in last ten years in press conference.



AUDITORS' AND FINANCIAL REPORT

Y. H. CHEUNG & COMPANY

CERTIFIED PUBLIC ACCOUNTANTS
ROOM 1504, 15/F., LI PO CHUN CHAMBERS,
189, DES VOEUX ROAD, CENTRAL,
HONG KONG.
TEL: 2541 5838 FAX: 2851 2802

張耀鴻會計師行
香港上環德輔道中一八九號
半買樓大廈十五樓一五〇四室
電話：二五四一五八三八
傳真：二八五一二八〇二

AUDITORS' REPORT

TO THE MEMBERS OF THE SAMARITAN BEFRIENDERS HONG KONG (incorporated in Hong Kong with limited liability)

We have audited the annexed financial statements which have been prepared in accordance with accounting principles generally accepted in Hong Kong.

Respective Responsibilities of Members of Executive Committee and Auditors

The Companies Ordinance requires the Executive Committee to prepare financial statements which give a true and fair view. In preparing financial statements which give a true and fair view, it is fundamental that appropriate accounting policies are selected and applied consistently.

It is our responsibility to form an independent opinion, based on our audit, on those statements and to report our opinion to you.

Basis of Opinion

We conducted our audit in accordance with Statements of Auditing Standards issued by the Hong Kong Society of Accountants. An audit includes examination, on a test basis, of evidence relevant to the amounts and disclosures in the financial statements. It also includes an assessment of the significant estimates and judgments made by the Members of the Executive Committee in the preparation of the financial statements, and of whether the accounting policies are appropriate to the Corporation's circumstances, consistently applied and adequately disclosed.

We planned and performed our audit so as to obtain all the information and explanations which we considered necessary in order to provide us with sufficient evidence to give reasonable assurance as to whether the financial statements are free from material misstatement. In forming our opinion, we also evaluated the overall adequacy of the presentation of information in the financial statements. We believe that our audit provides a reasonable basis for our opinion.

Opinion

In our opinion, the financial statements give a true and fair view, in all material respects, of the state of the Corporation's affairs as at 31 March 2002 and of its surplus in Accumulated Fund for the year then ended and have been properly prepared in accordance with the Companies Ordinance.



Y. H. Cheung & Company
Certified Public Accountants
30 May 2002

Y. H. CHEUNG & COMPANY

CERTIFIED PUBLIC ACCOUNTANTS

ROOM 1504, 15/F., LI PO CHUN CHAMBERS,

189, DES VOEUX ROAD, CENTRAL,

HONG KONG.

TEL: 2541 5838

FAX: 2851 2802

張耀鴻會計師行
香港上環德輔道中一八九號
李寶椿大廈十五樓一五〇四室
電話：二五四一五八三八
傳真：二八五一二八〇二

核數師報告書

致香港撒瑪利亞防止自殺會 (根據香港『公司條例』註冊之有限責任團體)會員：

本核數師(以下簡稱「我們」)已完成審核經香港公認會計原則編製的附同財務報表。

執行委員會及核數師的責任

『公司條例』規定執行委員會須編製真實與公正的財務報表。在編製該等財務報表時，執行委員會必須貫徹採用合適的會計政策。

我們的責任是根據我們審核的結果，對該等財務報表作出獨立意見，並向會員報告。

意見的基礎

我們是按照香港會計師公會規定的核數準則進行審核。審核範圍包括以抽查方式查核該財務報表所載數額及披露事項之有關憑證，亦包括評估執行委員會於編製該等財務報表時所作的重大估計和判斷及所釐定的會計政策是否適合貴會的具體情況、及有否貫徹運用並有足夠披露該等會計政策。

我們在策劃和實行審核工作時，目標是以取得一切我們認為必需的資料及解釋使我們能獲得充份的憑證以確定該等財務報表沒有重大錯誤陳述。在作出意見時，我們亦已衡量該等財務報表所載資料在整體上是否足夠。下列意見乃基於我們的審核工作。

意見

我們認為上述的財務報表均真實與公正地反映貴會於2002年3月31日的財務狀況及貴會截至該日為止年度的累積基金盈餘，並已符合『公司條例』規定編製。

張耀鴻會計師行
香港執業會計師
2002年5月30日

香港撒瑪利亞防止自殺會
THE SAMARITAN BEFRIENDERS HONG KONG
資產負債表
BALANCE SHEET
2002年3月31日
AS AT 31 MARCH 2002

		2002 HK\$	2001 HK\$
流動資產	CURRENT ASSETS		
手存現金	Cash in hand	6,000	3,000
銀行存款	Cash at banks	892,671	701,239
定期存款	Fixed deposits	846,901	829,937
預付款	Prepayment	1,000	1,260
		<u>1,746,572</u>	<u>1,535,436</u>
減：流動負債	LESS: CURRENT LIABILITIES		
應付款項	Accrued expenses	<u>(188,927)</u>	<u>(219,308)</u>
		1,557,645	1,316,128
非流動資產	NON-CURRENT ASSETS		
水電按金	Utility deposits	11,300	11,300
傢具器材	Furniture, fittings and equipment	<u>1</u>	<u>1</u>
資產淨值	NET ASSETS	<u>1,568,946</u>	<u>1,327,429</u>
資金來源	Represented by:		
累積基金	ACCUMULATED FUND (note 3)	364,393	361,024
特別基金	SPECIAL FUND (note 4)	502,405	491,405
關懷身邊人基金	CARING FUND (note 5)	414,534	395,000
危機中心基金	SUICIDAL CRISIS CENTRE FUND (note 6)	132,614	---
儲備	GENERAL RESERVE (note 7)	<u>155,000</u>	<u>80,000</u>
		<u>1,568,946</u>	<u>1,327,429</u>

The attached notes form an integral part of these accounts.
Approved by the Executive Committee on 30 May 2002
附註乃賬項之一部份
於2002年5月30日經執行委員會通過接納


Chairman
主席


Treasurer
財政

香港撒瑪利亞防止自殺會
THE SAMARITAN BEFRIENDERS HONG KONG
累積基金
ACCUMULATED FUND
收支表
INCOME AND EXPENDITURE STATEMENT
2001/02 年度
FOR THE YEAR ENDED 31 MARCH 2002

	2002 HK\$	2001 HK\$
主要收入	PRINCIPAL REVENUES	
捐款及津貼：	Donations and subsidies received from:	
香港公益金	Community Chest of Hong Kong	1,394,000
香港賽馬會	Hong Kong Jockey Club	
慈善信託基金	Charities Trust	205,000
社會福利署	Social Welfare Department	142,141
其他	Others	18,848
	1,681,867	1,759,989
其他收入 (註 8)	OTHER REVENUES (note 8)	
	101,784	142,660
	<u>1,783,651</u>	<u>1,902,649</u>
費用支出	GENERAL EXPENSES	
個案費用	Case expenses	700
暑期服務	Summer services	9,946
訓練費用	Training expenses	129,414
交通費	Travelling expenses	93,690
薪金	Staff salaries	902,710
公積金	Provident fund contribution	17,204
醫療	Medical expenses	1,036
租金及差餉	Rent and rates	111,552
辦公室用品	Office supplies	30,010
推廣及宣傳	Publicity and promotion	37,450
年刊及印刷	Annual reports and printing	69,125
報章月刊書籍	Newspaper, journals and books	10,550
傢具器材	Furniture, fixtures and equipment	21,635
維修保養	Repairs and maintenance	49,807
電話及傳呼	Telephone and paging	31,019
水、電	Electricity and water	54,205
郵費	Postage	3,825
清潔用品及費用	Sanitary and cleaning expenses	3,725
聯會會費	Subscription to affiliated associations	2,830
開會費用	General meeting expenses	1,080
義工嘉許	Volunteers' recognition	7,087
康樂活動	Recreational activities	3,604
週年餐會	Annual dinner	9,866
四十週年活動	Fortieth anniversary activities	86,609
茶點小食	Refreshment	9,558
保險費	Insurance	2,701
雜費	Sundry expenses	6,607
	<u>1,705,282</u>	<u>1,707,545</u>
本年度盈餘	SURPLUS FOR THE YEAR	195,104
減：轉予關懷身邊	LESS: TRANSFER TO :	
人基金	CARING FUND	(130,000)
轉予儲備	GENERAL RESERVE	(60,000)
餘款入累積基金	BALANCE TO ACCUMULATED FUND	<u>5,104</u>
	3,369	

The attached notes form an integral part of these accounts. 附註乃賬項之一部份。
All the changes in the Accumulated Fund for the year have been included in the above statement. 年中累積基金所有變動已包括於上述收支表內。

香港撒瑪利亞防止自殺會
THE SAMARITAN BEFRIENDERS HONG KONG
賬項附註
NOTES TO ACCOUNTS
2001/02 年度
FOR THE YEAR ENDED 31 MARCH 2002

1. ORGANISATION 組織

The Corporation is a charitable body incorporated on 10 March 1994. The liability of the individual member is limited.

本會是一個慈善團體，於一九九四年三月十日在香港成立為會員有限責任之法人。

The Corporation is exempted under section 88 of the Inland Revenue Ordinance from any Hong Kong Tax.

本會已根據香港稅務條例第八十八章允准免稅。

The principal activities of the Corporation during the year were prevention of suicide and carrying out community education in this respect.

本會年內主要活動為防止自殺及教育社區有此意識。

The activities were mainly financed by outside donations.

本會活動主要由外界捐款資助。

2. SIGNIFICANT ACCOUNTING POLICIES 會計政策

(a) Measurement Basis 記數方式

The account have been prepared on the historical cost basis.
賬目是以已付之成本入賬。

(b) Furniture, Fixtures and Equipment 傢具器材

It is the Corporation's policy to write off the costs of all furniture, fixtures and equipment in the year of acquisition.

根據本會政策，一切新購入之傢具器材之成本於同年全部攤銷。

(c) Principal Revenue/Donations and Subsidies 主要收入/捐款及津貼

The principal revenues of the Corporation are from donations and subsidieis.
本會主要收入來自捐款及津貼。

They are recorded on the cash received basis. Specific donations are recorded in the period of usage specified by the donors.

捐款及津貼是以收入現金時記錄。特殊捐款則以捐助人指定之捐助期間入賬。

3. ACCUMULATED FUND 累積基金

The movements during the year were as follow:-
年中變動如下：

		2002 HK\$	2001 HK\$
年初結存	Fund balance at beginning of year	361,024	355,920
加：本年度淨盈餘	Add: Net surplus for the year	3,369	5,104
年終結餘	Balance at end of year	364,393	361,024

香港撒瑪利亞防止自殺會
THE SAMARITAN BEFRIENDERS HONG KONG

賬項附註(續)

NOTES TO ACCOUNTS (Continued)

2001/02 年度

FOR THE YEAR ENDED 31 MARCH 2002

4. SPECIAL FUND 特別基金

The Special Fund is set up to provide for capital improvements and setting up new centres.

特別基金是用作改善資產及成立新中心之用。

The movements during the year were as follow:-

年中變動如下:

		2002 HK\$	2001 HK\$
年初結存	Fund balance at beginning of year	491,405	466,194
加: 銀行利息收入	Add: Bank interest received	11,000	25,211
年終結餘	Balance at end of year	502,405	491,405

5. CARING FUND 關懷身邊人基金

The Caring Fund was originally set up for the purposes of financing the project of 'Starting a Caring World with Listening'. The objectives of the Caring Fund have now been extended to include community education in loving one's life and caring other people.

基金原本是用作資助「關懷身邊人，從聆聽開始」之計劃。現基金之目標已擴展至社區教育每人應熱愛生命，關懷別人。

The movements during the year were as follow:-

年中變動如下:

		2002 HK\$	2001 HK\$
年初結存	Fund balance at beginning of year	395,000	249,910
加: 售書收入	Add: Sale of books	921	7,614
捐贈	Donation received	10,613	14,630
銀行利息收入	Bank interest received	8,000	12,370
什項收益	Sundry income	---	2,100
累積基金來款	Transfer from Accumulated Fund	---	130,000
		414,534	416,624
減: 購書	Less: Books acquired	---	(21,624)
年終結餘	Balance at end of year	414,534	395,000

香港撒瑪利亞防止自殺會
THE SAMARITAN BEFRIENDERS HONG KONG

賬項附註(續)

NOTES TO ACCOUNTS (Continued)

2001/02 年度

FOR THE YEAR ENDED 31 MARCH 2002

6. SUICIDAL CRISIS CENTRE FUND 危機中心基金

The Government Social Welfare Department has agreed to provide finance out of Lotteries Fund to enable the Corporation to set up a suicidal crisis centre to provide immediate services to those who are in crisis situation and at high suicidal risk on a three year pilot basis. The income and expenditure during the year were as follows:

政府社會福利署同意以 3 年試驗性質撥款資助本會成立危機中心以便對有高危自殺傾向之人士提供援助。本年收支如下：

		HK\$
政府資助	Subvention received	275,377
減：支出	Less Expenditures	
傢具器材	Furniture, fixtures and equipment	21,729
薪金	Staff salaries	103,821
辦公室費用	Office supplies, cleaning and postage	1,971
保險	Insurance	7,469
招聘費用	Recruitment expenses	6,785
雜項	Sundry expenses	988
		<u>142,763</u>
年終結餘	Balance at end of year	<u>132,614</u>

7. GENERAL RESERVE 儲備

The movement during the year were as follows:

年中變動如下。

		2002 HK\$	2001 HK\$
年初結存	Fund balance at beginning of year	80,000	20,000
加：累積基金來款	Add: Transfer from Accumulated Fund	75,000	60,000
年終結餘	Balance at end of year	<u>155,000</u>	<u>80,000</u>

8. OTHER REVENUES 其他收入

		2002 HK\$	2001 HK\$
會費收入	Membership subscription	8,580	6,220
利息收入	Bank interest received	11,562	26,950
講座收入	Course fees	64,900	50,650
公積金退款	Provident fund refunded	---	50,114
雜項收入	Sundry income	16,742	8,726
		<u>101,784</u>	<u>142,660</u>



Consultants 顧問

Donors 捐款機構及社會人士

The Community Chest of Hong Kong 香港公益金

The Hong Kong Jockey Club Charities Trust 香港賽馬會慈善信託基金

Hong Kong Social Welfare Department 香港社會福利署

PCCW-HKT Ltd.-sponsored telephone lines for hotline service

香港電訊盈科有限公司—贊助本會熱線電話

Mass Transit Railway Corporation—Offering free advertising space for poster

地鐵公司—免費提供地鐵站海報宣傳位置

Hong Kong Coroner's Court—providing data of 2001 suicide death in Hong Kong

香港死因裁判法庭—提供二零零一年香港自殺死亡數字資料

Census and Statistics Department—providing data of 2001 population in Hong Kong

政府統計處—提供二零零一年香港人口數字資料

Education Department--providing data of 00/01 student suicide death in Hong Kong

教育署--提供二零零零/二零零一年度香港學童自殺死亡數字資料

SPONSORS OF ANNUAL DINNER 2001

二零零一年週年聚餐贊助公司

GRAND STANFORD INTER.CONTINENTAL 海景嘉福酒店

NEW WORLD RENAISSANCE HOTEL 新世界萬麗酒店

PANDA HOTEL HONG KONG 悅來酒店

OCEAN PARK HONG KONG 海洋公園

MTR CORPORATION 地鐵公司

PANASONIC SHUN HING INDUSTRIAL SALES (HK) CO.,LTD.

松下信興機電(香港)有限公司

LIST OF DONORS FOR THE ENDED MARCH 31,2002

2001/2002年度捐款機構及人士名單

THE FAR EAST MASONIC ASSOCIATION FOR CHARITY 遠東共濟慈善協會 \$6,300

WONG KIM SHUN TRUST FUND 黃儉純遺產捐款 \$12,500

HUI MEI TAK 許美德 \$5,000

GREAT WEB LIMITED 國際聯網公司 \$3,000

CHAN CHOI CHUN 陳彩珍 \$1,000

CHIN KONG SHAN \$300

TING LAI FAN 丁麗芬 \$200

TSOI MAN CHEONG 蔡文昌 \$200

TAI KIT YIP 戴建業 \$100

CHAN WING KWAN 陳永坤 \$80

Who we are 簡介

The Samaritan Befrienders Hong Kong obtains its funding primarily through subventions from the Community Chest, the Hong Kong Jockey Club. Donations from various sources support of the community are also important in helping us develop and improve our services. Please support our work by donation.

As our organization is a charitable institution, your donations (over \$100) are tax deductible.

香港撒瑪利亞防止自殺會的經費主要來自香港公益金及香港賽馬會的資助。社會人士的捐助有助本會的發展及提高本會的服務質素。請支持本會的服務。

本會乃一慈善團體，你所作(一百元或以上)的捐款可根據稅務條例獲豁免繳稅。

How to Donate 捐款方法

Please complete the following Donation Slip together with your crossed cheque for donation and return to our office (address: Unit 126-127, G/F, Kam Wah House, Choi Hung Estate, Kowloon). For enquiries, please call 2790-8844.

請填妥以下捐款回條，連同捐款劃線支票寄回本會(地址：九龍彩虹邨金華樓地下126-127室)，查詢電話：2790-8844。

I enclose herewith the sum of HK\$_____ being a donation for your organization. Please send me an official receipt.

茲奉上港幣HK\$_____ 作為捐款，並請發回收據。

Name : _____

姓名 : _____

Mailing Address 通訊地址 : _____

Tel No. 聯絡電話 : _____


Note : Crossed cheque should be made payable to 「The Samaritan Befrienders Hong Kong」

備註：劃線支票抬頭請寫「香港撒瑪利亞防止自殺會」

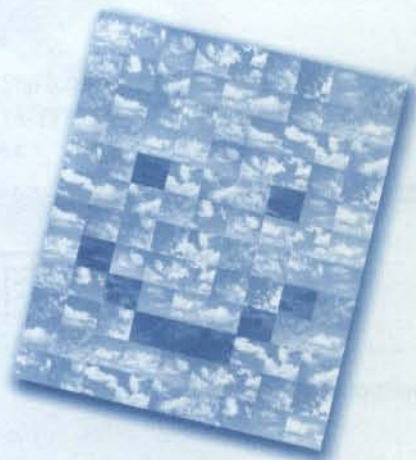
多謝您的支持!

晴天雨天要樂天

摸關鎖



難關難過終會過



... ..



香港撒瑪利亞防止自殺會
THE SAMARITAN BEFRIENDERS HONG KONG

Hotline 求助熱線: 2389 2222

Telephone lines for Hotline Service sponsored by PCCW-HKT Limited
電話熱線由香港電訊盈科贊助

Members of

會員機構

The International Association of Suicide Prevention 國際防止自殺會
The Hong Kong Council of Social Service 香港社會服務聯會
The Community Chest of Hong Kong 香港公益金

CHOI HUNG CENTRE 彩虹會所
Unit No. 126-127, G/F, Kam Wah House,
Choi Hung Estate, Kowloon, Hong Kong
TEL: 2790 8844 FAX: 2343 6359
九龍彩虹邨金華樓地下126~127號
電話: 2790 8844 傳真: 2343 6359

SHUN LEE CENTRE 順利會所
Unit No. F23, 3/F., Lee Foo House,
Shun Lee Estate, Kowloon, Hong Kong
TEL: 2341 7227 FAX: 2341 7007
九龍順利邨利富樓三樓F23室
電話: 2341 7227 傳真: 2341 7007

Email 電郵: sbhkinfo@sbhk.org.hk Web Site 網址: <http://www.sbhk.org.hk>